

# 2 Arcadia Street, Schofields, NSW 2762

## House For Sale

Thursday, 26 October 2023



2 Arcadia Street, Schofields, NSW 2762

Bedrooms: 4

Bathrooms: 2

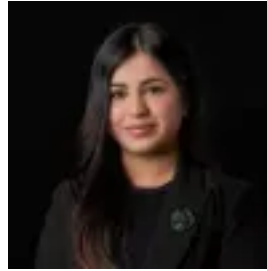
Parkings: 1

Area: 347 m2

Type: House



Amit Kumar  
0288964336



Siya Sachdeva  
0288964336

## Price Guide \$1,080,000

With a location that is second to none, this home is located within a 5-minute walk to the premium Galungarra Public School and a short distance to Schofields Train Station, Tallawong Metro Station, Premium Galungara School catchment and parks. This property boasts a high-quality family lifestyle with an ideal layout and is situated within the most highly sought-after part of Schofields. Bringing together the perfect blend of comfort and convenience, this versatile home boasts multi-living zones for you and your loved ones to enjoy. As you step inside the home you are greeted by the formal living room before entering the open plan layout of the living, dining and kitchen areas, providing a warm and inviting atmosphere for everyday living and entertaining. The property boasts an abundance of natural light between spaces which flows effortlessly to the outdoor alfresco. The well-appointed kitchen features stainless steel appliances, stone benchtops, four four-burner gas cooktop, a 60cm oven, an eat-in breakfast bar and plenty of storage space. The accommodation consists of four generously sized bedrooms all to its built-in robes, two of which feature double built-ins. The master bedroom showcases its private ensuite creating the perfect retreat. Features include:- Split system air-conditioning- Builtin robes to all bedrooms- Double-storey home- Single remote-controlled lock-up garage with internal access- Land Size: 347.4 sqm approx.- Corner positioned with a striking facade Location highlights:- 6 minutes drive to Schofields Train Station and Tallawong Metro Station- 5 Minutes drive to Schofields Shopping Village- Walking distance to the Premium Galungara Public School - 8 minutes drive to Rouse Hill Town Centre- Minutes walk to local parks - Within short distance to Childcare Centres and Medical Centres Disclaimer: All information contained herein is obtained from property owners or third-party sources which we believe are reliable. We have no reason to doubt its accuracy, however, we cannot guarantee it. All interested person/s should rely on their own enquiries.