

# 2 Bird Close, Craigieburn, Vic 3064



## Sold House

Thursday, 16 November 2023

2 Bird Close, Craigieburn, Vic 3064

Bedrooms: 3

Bathrooms: 2

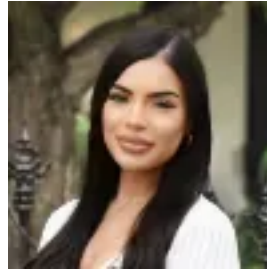
Parkings: 2

Area: 254 m2

Type: House



Arjun Chandaka  
0393002211



Stephane Bootlis  
0406806431

**\$567,000**

Uniquely laid out and beautifully lit with high windows and natural light, this gorgeous home will build stunning memories with you and your loved ones. Boasting an expansive family and dining area with views into the charming alfresco courtyard, full kitchen with quality appliances, master bedroom with its own ensuite plus a 2nd bedroom both with robes. An extra room on the mezzanine level can be a 3rd bedroom, rumpus or study. The double remote garage can park your car or convert into an extra family room. Within walking distance to Craigieburn Central, an array of eateries and family entertainment, close to great schools and playgrounds, this property and central location will set you up for an easier, fuller and more enjoyable quality of life. Highlights- Approximately 254sqm property- Tiled throughout the common areas- L-shaped lounge and dining area with air con unit- Spacious kitchen featuring quality s/s appliances, gas cooking, good storage space and breakfast counter- Master bedroom with BIR and own ensuite, 2nd bedroom with BIR, both downstairs- Potential 3rd loft style bedroom or study upstairs- Full main bathroom with tub- Big internal laundry off the kitchen- Landscaped and private courtyard with alfresco area- Double remote garage + house alarm- Located 3mins to Craigieburn Central, Craigieburn Sporting Club and a wide range of eateries and specialty stores- Close proximity to Splash! Waterpark, tennis courts and Craigieburn Station- Within catchment zone to Aitken Creek Primary School, Mount Ridley P-12 College and Elevation Secondary College, and many other quality public and private schools- Accessible to Melbourne CBD in approx. 40min and Tullamarine Airport in 15mins All information about the property has been provided to Ray White by third parties. Ray White has not verified the information and does not warrant its accuracy or completeness. Parties should make and rely on their own enquiries in relation to the property.