

2 Cedar Place, Ermington, NSW 2115

House For Sale

Wednesday, 17 April 2024



2 Cedar Place, Ermington, NSW 2115

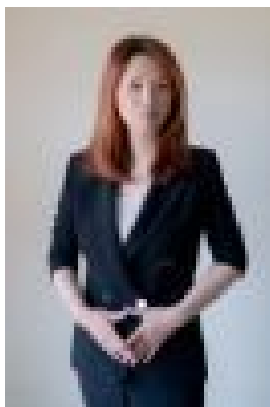
Bedrooms: 5

Bathrooms: 3

Parkings: 2

Area: 535 m2

Type: House



May Zhang

Contact Agent

This brand new architectural duplex is located in a beautiful quiet cul-de-sac back to the park. A magnificent large semi freestanding home, crafted to maximise its land area of 535m² boasts an impressive house size 315m², this designer residence is filled with an abundance of natural light, soaring ceilings and a clever floor plan that gives you the feeling of grand spaciousness as you walk in. To add to the convenience for an extended family, located on the ground floor is an additional 5th bedroom with its own ensuite, which could also be utilised as a home office/study. Furthermore massive 2nd living room is available separately at the front with a nice connection from kitchen area as well. Featuring :- Concrete suspended slab on first floor- Luxuriously appointed kitchen with architectural curved island bench, engineered marble benchtops, BOSCH appliances, integrated microwave and dishwasher and most importantly a double integrated fridge making entertaining a delight- Walk in Butlers Pantry with high end engineered marble benchtops and LED striplighting- Full commercial grade aluminium door frame and windows throughout- Four bedrooms upstairs with two rooms having internal ensuites, plus a fifth bedroom downstairs with ensuite as well- Floor to ceiling tiles throughout the whole bathroom with luxurious LED vanity mirrors- Black designer tapware throughout with frameless shower screens- Dark mirror built in robes throughout all rooms, with high end joinery- All spaciously sized bedrooms, especially with super-size master bedroom- Smart Entry Digital front door lock giving the convenience of entry via pin code, mobile phone, swipe card or fingerprint scan- Full Ducted Daikin Air conditioning throughout with dual zones- Video intercom and alarm- Lock up internal garage with remote control doors- Additional two study tables upstairs with high end joinery- Ample storage space downstairs and upstairs with high end joinery- Extensive landscaping and undercover outdoor alfresco entertaining area- Long driveway that gives an extra 3 additional car spaces on top of the double lock up garage, total 5 cars