

# 2 Coozac Place, Lilydale, Vic 3140



## Townhouse For Sale

Tuesday, 11 June 2024

2 Coozac Place, Lilydale, Vic 3140

**Bedrooms: 3**

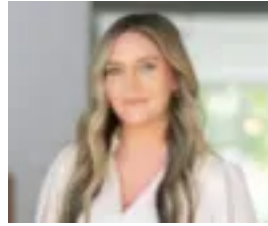
**Bathrooms: 2**

**Parkings: 2**

**Type: Townhouse**



Jay Carroll  
0433266162



Cara Vowles  
0423613981

**\$680,000 - \$730,000**

Pairing designer styling with unparalleled convenience, this townhouse is ready to reward those with an eye for quality and a desire for an effortless lifestyle, only footsteps from parkland and Lilydale Village. Displaying sleek sophistication, the open plan living, dining and kitchen embraces a fluid and functional ambience that's embellished with high ceilings and equipped with stone topped benches, stainless steel appliances plus an island breakfast bench. Trendy floorboards flow throughout the space and continue up to a wonderful family retreat, while sliding doors draw you out onto a fabulous courtyard with sun-splashed decking. The bedroom configuration has been thoughtfully conceived and includes a mid-level master bedroom with walk-in-robe, accompanied by an ensuite-effect bathroom with toilet. Across the top floor, the two remaining bedrooms boast built-in-ropes and are serviced by a stylish family bathroom and separate toilet. Premium extras include a laundry, split system heating/air conditioning, security alarm, water tank, large storeroom/cellar plus a double garage with internal access. Leave the car at home and walk to fabulous local amenities, including Melba Park Playground, Warburton Rail Trail, Lilydale shops, cafes and restaurants, St Patrick's Primary School, Lilydale Primary School, Lilydale High School, Mount Lilydale Mercy College and Lilydale Train Station.