

2 Evelyn Road, Ringwood North, Vic 3134



House For Sale

Tuesday, 23 April 2024

2 Evelyn Road, Ringwood North, Vic 3134

Bedrooms: 4

Bathrooms: 3

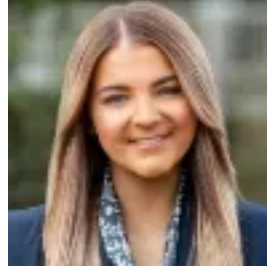
Parkings: 1

Area: 602 m2

Type: House



Chris Watson
0398798827



Olivia Mackie
0398798827

\$1,120,000 - \$1,220,000

THE PROPERTY Classic charm and contemporary indulgence are perfectly combined in this beautifully renovated Victorian home, set in a sought-after position with four bedrooms and multiple living zones to enjoy. Light-filled and spacious this stunning home has been customised to suit the desires of modern families, while maintaining elegant period features throughout including 11-foot ceilings, timber fretwork, exquisite fireplaces and richly polished floorboards. Lush, leafy front gardens and a classic bullnose verandah warmly welcome you inside, with the stunning entry hall drawing you through to the fireside living room and separate family room offering a tranquil retreat. Flowing on to the rear dining domain and contemporary kitchen, with Smeg appliances and stone surfaces, with bi-fold doors opening up to reveal an elevated covered deck, perfect for relaxed gatherings in any season. Accommodation is ample with two front bedrooms boasting window seats, a rear main bedroom complete with ensuite, plus a fourth under-house bedroom with separate entrance and ensuite, offering versatility and additional space. Rounding out the long list of impressive inclusions, a salt chlorinated in-ground pool, paved patio, single carport, ducted heating and evaporative cooling for comfort.

THE FEATURES- Stylishly updated four-bedroom, three-bathroom period home- Multiple living zones a, ideal for growing families- Three out of four bedrooms feature BIRs, the main & fourth with ensuite- Luxe fully tiled bathroom with walk in shower, vanity & toilet- Elevated covered alfresco deck, ideal for entertaining- Lush gardens with resort style in-ground pool & paved patio- 6-star central ducted heating & evaporative cooling for comfort- Separate home office

THE LOCATION Perfectly positioned in a quiet, leafy pocket, yet only a short stroll to premium shopping and dining at Eastland, with Ringwood Heights Primary and Norwood Secondary College both within walking distance, and both Eastlink and Ringwood train station close at hand for an easy commute.