

# 2 Galada Avenue, Parkville, Vic 3052

## Sold House

Friday, 3 May 2024

2 Galada Avenue, Parkville, Vic 3052

Bedrooms: 5

Bathrooms: 2

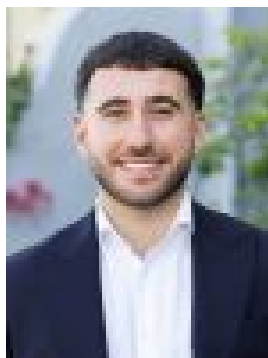
Parkings: 2

Area: 525 m2

Type: House



James Pilliner  
0405106421



Nicholas Exarchos  
0468304634

**\$1,745,000**

Surrounded by parkland in a prized city-fringe neighbourhood, this contemporary home on 525sqm of land (approx) is perfect for families that love to entertain with its expansive double-storey design, abundance of natural light and spacious outdoors to enjoy. Boasting tranquil views from nearly every window, the home's impressive interior showcases four main bedrooms (large master) all with fitted robes, as well as a private ensuite, stylish central bathroom and two powder rooms – one on each level. Underlining its amazing space is the inclusion of a home office (or 5th bedroom), huge living/theatre room with retractable screen and integrated speakers, large rumpus (upstairs) and open-plan family/dining area adjoined by a stone-bench kitchen with ample storage and Miele/Bosch appliances. Ducted heating, split-system air conditioning, high ceilings and double-glazed windows all add to the allure, along with ducted vacuum, family-sized laundry and excellent storage options. Completing the picture is a wide north-facing backyard with alfresco-style entertaining area and high fencing for exceptional privacy, plus a remote-control double garage with additional storage cupboards. The open spaces of Manningham Reserve across the road, it's also walking distance to local buses, Flemington Bridge Station and Flemington Road trams, as well as easy access to the Moonee Ponds Creek Trail, Melbourne Zoo, hospital/university precincts and Citylink.