

# 2 Gladman Close, Isaacs, ACT 2607



## Sold Townhouse

Friday, 11 August 2023

2 Gladman Close, Isaacs, ACT 2607

Bedrooms: 3

Bathrooms: 2

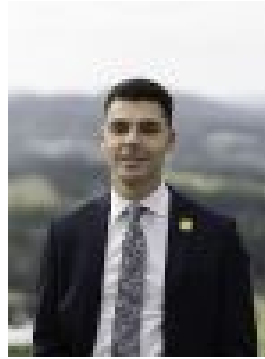
Parkings: 2

Area: 126 m2

Type: Townhouse



Alec Brown  
0406866007



Kaine Walters  
0450146538

**\$875,000**

**\*\*Please note this property will go to auction on Saturday, 3rd February 2024 as part of our Summer Showcase Event held at the Hyatt Hotel Canberra. The doors will open at 9am and this property is scheduled to go to auction from 12:30pm. Occupying a gloriously sun-bathed corner block in the peaceful Pine Vale estate, this lovely home is all about lifestyle. Set amid easy-care garden surrounds, the home's interiors span a bright and airy single level, ideally suited to both downsizers and young families. Extremely well-presented and enabling you to move straight in, there are two spacious living areas, one of which extends effortlessly to a fantastic entertaining patio with plenty of room for a BBQ and sun loungers. The three carpeted bedrooms are also generously sized, and you'll love the newly renovated ensuite off the master bedroom - a real indulgence! A landscaped and perfectly private backyard will be heaven for both precious pets and children, but if you feel like venturing further afield, Isaacs Ridge walking trails are virtually on your doorstep. Property features include:**

- Spacious and light filled lounge and dining room
- Casual family room opens to the alfresco patio
- Galley kitchen with electric cooktop, wall oven, dishwasher, and pantry
- Three good-sized and carpeted bedrooms, each with robing and fans
- Master bedroom has a walk-in robe and adjoins a luxuriously updated ensuite
- Main bathroom with shower, bath, heated lighting, and separate w/c
- Ducted gas heating throughout, plus two reverse cycle a/c units
- Laundry with ample storage and outside access
- Paved alfresco patio, ideal for entertaining
- Lovely and private backyard, fully fenced and with garden beds
- Secure double garage with internal entry
- Garden shed
- Northerly aspect
- Block size: 632sqm
- Living area: 126sqm
- Rates: \$3,032 pa
- Land tax: \$5,405pa (investors only)
- Body Corporate: \$3,111pa
- UV: \$450,000 (2023)

Close proximity to:

- Isaacs Ridge
- Isaacs shops
- Southlands Shopping Centre
- Sunday Farmer's Markets
- 15-minutes drive to the Canberra City
- Woden Westfield
- Canberra Hospital

Disclaimer: All information regarding this property is from sources we believe to be accurate, however we cannot guarantee its accuracy. Interested persons should make and rely on their own enquiries in relation to inclusions, figures, measurements, dimensions, layout, furniture and descriptions.