

2 Hurst Street, Attadale, WA 6156



House For Sale

Wednesday, 12 June 2024

2 Hurst Street, Attadale, WA 6156

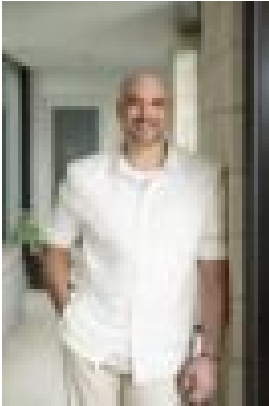
Bedrooms: 4

Bathrooms: 2

Parkings: 2

Area: 482 m2

Type: House



Thomas Bale
0406403888

New to Market

This spacious executive family home presents an exciting opportunity to buy into this prestigious suburb. Ticking all the key real estate boxes – a large comfortable two-storey family home with plenty of accommodation, fabulous outdoor entertaining areas, a level corner block, a north facing backyard and walking distance to an array of stunning open spaces and the sparkling waters of the Swan River – this property is one to seize with both hands. This light and bright executive home has been extensively renovated, this four-bedroom, two-bathroom home is ready for a family to move straight into. Ideal for large families who value their own space, this home has been thoughtfully designed to include top quality fittings and a host of modern, lifestyle features, offering sleek styling and supreme comfort. The free-flowing configuration offers fantastic separation between the living and sleeping areas. The master bedroom is also to the front of the home which includes a luxury ensuite with large built-in robes that have been thoughtfully designed throughout with bespoke cabinetry. The bedroom boasts bi-fold doors that open out onto the north of the home, creating a lovely space in which to relax. With a stunning in-ground pool and alfresco area your home is an entertainer's paradise. It's a fabulous, extensive home for families who love to both relax and entertain. If that's not enough, the home also boasts solar panels to keep electrical bills down. Be quick to view this home – it's a rare find and will be popular! - Four bedrooms- Two bathrooms- Two living areas- Two outdoor living zones- Two car garage- Extensively renovated throughout- Solar panels- Pool- Reticulated gardens (bore)- Air conditioning- Workshop

THE LIFESTYLE YOU WILL LIVE The ever-sought-after lifestyle of Attadale is at your fingertips. Footsteps from your doorstep, two of Western Australia's most renowned natural areas provide a space for all things active living. Combine this serene locale with all the vibrancy, the local cafes, restaurants and proximity to transport, and your lifestyle is one of leisure. Positioned with proximity to Fremantle, and just a short drive to the golden sands of Western Australia's most pristine beaches, all the boxes are ticked with Attadale living!

THE DETAILS YOU WILL NEED Council Rates: \$2,381.95 per annum (approx.) Water Rates: \$1,415.96 per annum (approx.) Land Area: 482m² Build Area: 305m² For further details please contact Exclusive Selling Agent Thomas Bale from Mi Casa Property Boutique on 0406 403 888. Disclaimer: Whilst we use our best endeavours to ensure all information is correct, buyers should make their own enquiries and investigations to determine all aspects are true and correct.