

2 Lawry Place, Shalvey, NSW 2770



House For Rent

Thursday, 11 April 2024

2 Lawry Place, Shalvey, NSW 2770

Bedrooms: 3

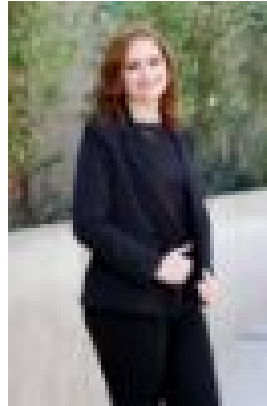
Bathrooms: 1

Parkings: 3

Type: House



Mikayla Wood
(02)47323333



Samantha Drury
(02)47323333

\$480.00 Per Week

Looking for a cozy and spacious family home situated in a quite cul-de-sac? Look no further! Welcome to 2 Lawry Place, a delightful 3-bedroom, 1-bathroom house with everything your family needs. This property offers comfort, convenience, and a fantastic location. Don't miss out on this opportunity to create unforgettable memories in your new home!

Bedrooms: 3 **Bathrooms:** 1 **Parking:** Garage and Off-Street Parking **Outdoor Area:** Featuring a generous backyard perfect for barbecues, or simply enjoying the surroundings. The yard is fully fenced, providing a safe and secure space for children to play.

Interior Features: Upon entering, you'll be greeted by an inviting living area with air conditioning, providing ample space for relaxation and entertainment. The kitchen boasts plenty of storage, and a walk in pantry. The bedrooms are generously sized, each offering comfort and natural light with the main room offering a built in wardrobe. Bathroom was separate bath and shower. Internal laundry with second toilet. Single lock up garage with a secondary room for extra storage. Freshly painted and new blinds throughout.

Convenient Location: 2 Lawry Place is situated in a family-friendly neighborhood, close to schools, parks, and public transportation. You'll find yourself just a short drive away from shopping centers, cafes, and all the amenities you need for a comfortable lifestyle.

Nearby Schools: Shalvey Public School Chifley College Shalvey Campus Tregear Public School

Nearby Shopping: Westfield Mount Druitt Plumpton Marketplace