

2 Lesley Crescent, Crafers, SA 5152

HARRIS

Sold House

Wednesday, 22 November 2023

2 Lesley Crescent, Crafers, SA 5152

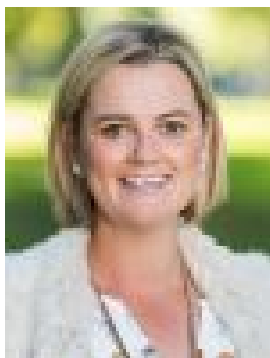
Bedrooms: 3

Bathrooms: 1

Parkings: 3

Area: 1428 m2

Type: House



Arabella Hooper
0403336407



Taryn Varcoe
0405591561

Contact agent

Also known as 13 Old Mount Barker Road, Crafers Surrounded by lush greenery to hide from plain sight and set the tone for a tranquil day-to-day -whether you're outside or in this mid-century 3-bedroom home with an elevated rear outlook - you'll love every single moment at 2 Lesley Crescent, just a stroll from Protea Park/Playground and a 3-minute drive from Stirling village. Ideally placed on a wide corner plot, this double brick-built haven fans like the wings of an aeroplane to hover amongst the treetops and give all three bedrooms on one side some refuge, far away from the living zones at the other. Think of the super-functional kitchen as the cockpit, ensuring weekend cooking sessions are central (literally) to daily life in a home that's been adored and wonderfully kept by the same family for 28 years. The stone-fronted facade is timeless, oozing subtle mid-century vibes, grabbing light in spades through its expansive fixed windows to energise the main sitting room blessed with polished timber floors and a cosy combustion fireplace. Step out to the rear deck, where a glory vine keeps the sun at bay and an array of camellias feature prominently amongst the established gardens below, creating an ever-changing tapestry of colours. Just 12 minutes from the Tollgate, a short trip from Hahndorf and a range of Hills wineries, life seems so removed here that the city will feel like a long-haul flight away rather than a 20-minute drive. You've arrived at your destination. More to love: - Prized corner allotment - Double garage, carport and additional off-street parking - Ducted reverse cycle heating and cooling - Flexible floorplan with multiple living zones - Three nicely sized bedrooms - Beautifully presented established gardens with automatic watering system - Front deck surrounded with azaleas, rhododendrons, and ferns - Abundant bird life and resident koala - Loads of storage and separate laundry - High ceilings and timber floorboards throughout - Timber-decked patios to front and rear - Dishwasher and filtered water to kitchen - Walking distance from bus stops and local park/playground - Moments from Crafers and Stirling Villages - And much more. Specifications: CT / 5423/443 Council / Adelaide Hills Zoning / RuN Built / 1964 Land / 1428m² Council Rates / \$2,448pa SA Water / \$255.55pq Estimated rental assessment / \$650 - \$710 per week / Written rental assessment can be provided upon request Nearby Schools / Crafers P.S, Heathfield P.S, Upper Sturt P.S, Aldgate P.S, Heathfield H.S, Urrbrae Agricultural H.S Disclaimer: All information provided has been obtained from sources we believe to be accurate, however, we cannot guarantee the information is accurate and we accept no liability for any errors or omissions (including but not limited to a property's land size, floor plans and size, building age and condition). Interested parties should make their own enquiries and obtain their own legal and financial advice. Should this property be scheduled for auction, the Vendor's Statement may be inspected at any Harris Real Estate office for 3 consecutive business days immediately preceding the auction and at the auction for 30 minutes before it starts. RLA | 226409