

**2 Maple Close, Canada Bay, NSW 2046**

**DibChidiac®**

**House For Sale**

Wednesday, 12 June 2024

2 Maple Close, Canada Bay, NSW 2046

**Bedrooms: 3**

**Bathrooms: 1**

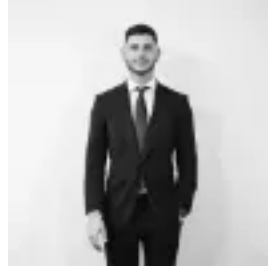
**Parkings: 2**

**Area: 613 m2**

**Type: House**



Dib Chidiac  
0291366472



Alex Cummins  
0291366472

## Buyers guide \$2,500,000

Instantly appealing thanks to its sensational parkfront position, this attractive freestanding home offers a great lifestyle opportunity adjoining the vast expanse of Barnwell Park Golf Course. It features fresh, light and airy interiors, generous proportions and a delightful leafy garden for alfresco entertaining. The property sits in a peaceful cul-de-sac setting with leafy surrounds and is presented in excellent condition, yet offers plenty of potential for a creative extension or rebuild (STCA), that would definitely see an increase in value. -?A level 613sqm land parcel with an extra-wide street frontage-?An ideal easterly aspect and leafy park views over the golf course-?Smartly updated and featuring a modern kitchen with breakfast bar -?Bright interiors include a generous open lounge and dining areas-?The three good-sized bedrooms all have built-ins and ceiling fans -?Ducted reverse cycle air-conditioning throughout the property-?Spacious and private backyard with a covered patio and level lawn-?Double lock-up garage plus extra parking and a large front garden-?Future potential to renovate, extend or add a second storey (STCA)-?Strolling distance to the golf course, parks and foreshore walks