

**2 Metcalf Crescent, Rowville, Vic 3178**



**House For Sale**

Wednesday, 7 February 2024

2 Metcalf Crescent, Rowville, Vic 3178

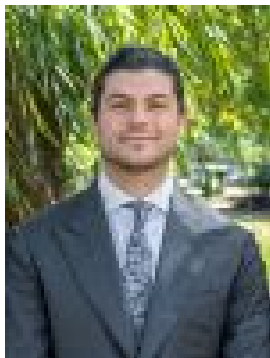
**Bedrooms: 4**

**Bathrooms: 2**

**Parkings: 2**

**Area: 721 m2**

**Type: House**



Rene Mawad  
0403141596



Cat Schwind  
0401011314

## **Auction (\$1,100,000 - \$1,200,000)**

**THE PROPERTY** Situated in a sought-after pocket backing on to Eildon Park, this impressive four-bedroom home offers a dream lifestyle for families. Spread across one enticing level, there is a multitude of living space for all to enjoy. Light-filled and inviting, the spacious open plan family zone provides a warm welcome, with the stylishly renovated kitchen flaunting premium appliances, integrated dishwasher, and walk-in pantry an elegant centrepiece. Stepping through to the central dining domain complete with corner bar, a stunning custom barn door leads through to the vast rumpus room, while the huge covered alfresco is connected to the space, allowing for effortless indoor/outdoor entertainment, with the luxe resort-style pool mere steps away. Generously sized, the main bedroom includes a walk-in robe and ensuite, with three further plush bedrooms serviced by the sparkling family bathroom.

**THE FEATURES** • Stylishly renovated four-bedroom, two-bathroom home • Three spacious living zones, ideal for growing families • Master bedroom features walk-in robe & elegant ensuite • Three further bedrooms, two with built-in robe storage • Luxe main bathroom flaunts shower, bath & vanity • Vast covered alfresco & in-ground solar heated pool • Ducted heating and multiple split systems for comfort

**THE LOCATION** Perfectly positioned in a family-friendly neighbourhood, just steps to parkland, within easy reach of local schools including Park Ridge Primary and Rowville Secondary College, plus Stud Park Shopping Centre, Westfield Knox, Eastlink, and the Monash Freeway all close by.

On Site Auction Saturday 2nd of March at 2:30pm