

2 Moira Lane, Grovedale, Vic 3216



House For Sale

Thursday, 13 June 2024

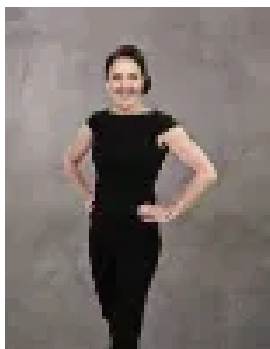
2 Moira Lane, Grovedale, Vic 3216

Bedrooms: 2

Bathrooms: 2

Parkings: 1

Type: House



Michelle Winckle
0352411488



Sophie Spowart
0478957905

\$499,000 - \$545,000

Ideally located in a quiet pocket of Grovedale, within walking distance to shops, schools, parks, and Marshall Train Station. This neat-as-a-pin home combines space and comfort to create the perfect first home, investment, or downsizer property. Boasting an expansive floor plan, this home is sure to tick all your boxes. Featuring 2 great-sized bedrooms, the master suite includes a large walk-in robe and ensuite. The second bedroom includes a large built-in robe for extra storage. The home also includes a spacious central bathroom complete with a shower, bath, and vanity. Boasting a light-filled open-planned kitchen with great bench space and ample storage, the large living-dining area is well-sized and has ducted heating and evaporative cooling for all-year-round comfort. Outdoors is an entertainers delight with a large undercover alfresco area perfect for hosting family and friends all year long. The home also includes a low-maintenance garden and a single garage for secure parking and convenience. Centrally located, 5 minutes (approx.) from Wauron Ponds shopping and entertainment precinct, moments from the Surfcoast Highway or Barwon Heads Road for easy access to the beach, and only 12 minutes (approx.) from the CBD, enjoy convenient local living with fantastic accessibility to city and surf.*All information about the property has been provided to Hayeswinckle by third parties. Hayeswinckle has not verified the information and does not warrant its accuracy or completeness. Parties should make and rely on their own enquiries in relation to this property.