

2 Morgan Place, Strathfield, NSW 2135

House For Sale

Thursday, 12 October 2023



2 Morgan Place, Strathfield, NSW 2135

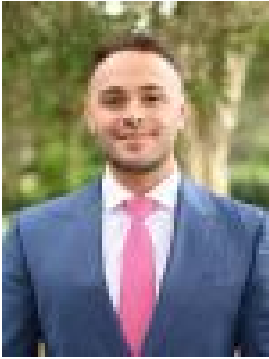
Bedrooms: 5

Bathrooms: 5

Parkings: 3

Area: 638 m2

Type: House



Elie Semrani
0452353735



Adrian Jian-Sheng Wu
0297632277

Guide - \$3,880,000

Generous proportions, premium finishes and seamless indoor/outdoor transitions unite in this quality-built residence to deliver an exceptional family home that is as brilliantly functional and versatile as it is undeniably stylish. Spanning two luxurious levels and flooded with natural light, this meticulously designed residence showcases a selection of formal and informal living zones dominated by soaring ceilings and multiple sliding windows allowing effortless cross ventilation. An inviting open plan living area is warmed in winter by a Real Flame gas fireplace, while chef's will enjoy the premium stone island kitchen with Smeg gas appliances which enjoys an easy transition to a sun bathed private courtyard, perfect for alfresco entertaining. Accommodation comprises five generous light filled bedrooms, all of which are appointed with custom built-in wardrobes. Four of the bedrooms are on the upper level including the deluxe master with a custom dressing room, while the other bedrooms open to private sunlit balconies. The lower level fifth bedroom is situated in a self-contained studio like space/second dwelling, perfect for guest accommodation extending to a private courtyard bathed in sunshine overlooking the sparkling pool. Further highlights of the home include a lower level media/family room, five stylish polished granite/natural stone bathrooms, ducted air conditioning, video security intercom, a fitted out BBQ alfresco area, a tiled in ground pool, alongside great storage. The home is complete with internal access to a double remote garage plus plenty of off-street parking. Promising ultra-convenience, the residence is positioned within a level stroll to Elite Strathfield Private Schools, Strathfield Shops, Eateries, Strathfield Transport and Strathfield Park.