

# 2 Morgan Street, Islington, NSW 2296



## House For Rent

Monday, 13 May 2024

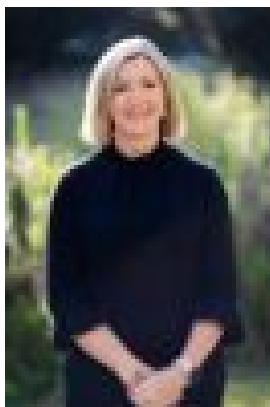
2 Morgan Street, Islington, NSW 2296

**Bedrooms: 3**

**Bathrooms: 1**

**Parkings: 1**

**Type: House**



Amanda Swan  
0457809434

**\$750 pw**

Welcome to this charming centrally located cottage in Islington, ideal for inner-city family living. Featuring a front porch ideal for taking in the winter sun, this property boasts 3 generously sized bedrooms, a modern bathroom with both a separate bath and shower. The open-plan living area seamlessly connects to a well-equipped kitchen, ensuring comfort and convenience for your family. Step outside through glass sliding doors onto the relaxing verandah, where you can unwind amidst a maintenance-free garden, allowing you more time to savor your inner-city lifestyle. Key features: 3 spacious bedrooms with ceiling fans in each Built in wardrobe in main bedroom Family bathroom with separate bath and shower Corner block position 1 off-street car space available Floating timber flooring & Kauri pine floorboards add to character of the home Cottage in excellent condition with low maintenance requirements Modern kitchen with electric cooktop Open-plan kitchen and dining area Spacious living room with split-system air conditioning Separate family sized laundry Secure yard for peace of mind Conveniently located: 10 minutes to Newcastle CBD 3 minutes to Islington Primary School 3 minutes to Tighes Hill TAFE 11 minutes to beautiful Newcastle Beach Available: approx 30/5/2024 6 or 12 month lease Pets considered on application Only Crawford Real Estate applications accepted \*To inspect our properties you must register so we can advise of any changes or cancellations. To register either hit the book inspection button or enquire to be advised of available times. \*Disclaimer: We have obtained all information provided here from sources we believe to be reliable; however, we cannot guarantee its accuracy. Prospective tenants are advised to carry out their own investigations.