

2 Morris Grove, Zetland, NSW 2017



Townhouse For Sale

Monday, 22 April 2024

2 Morris Grove, Zetland, NSW 2017

Bedrooms: 3

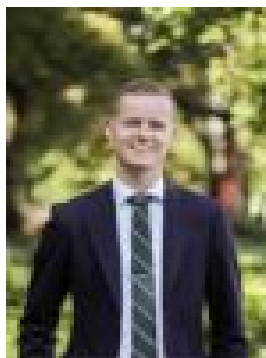
Bathrooms: 2

Parkings: 2

Type: Townhouse



Charles Touma
0283220750



Matthew Downes
0283220750

Buyers Guide - \$1,850,000

Auction - 18th May Generous proportions, stylish designer interiors and a desirable north-to-rear aspect are winning features in this tastefully renovated townhouse, enjoying a prized position in sought-after Victoria Park. Crafted to create a seamless integration between the indoors and out, this dual level residence channels a sleek modern aesthetic with a whole-floor living area and an effortless flow to a sun soaked entertainers' courtyard. A gourmet chef's kitchen with a vast stone island breakfast bar serves as the social heart of the home, while the upper level comprises three well-scaled bedrooms, all of which are appointed with built-in wardrobes and enjoy access to balconies. Further highlights include deluxe fully tiled bathrooms, the master features an ensuite, while there is a guest powder room on the lower level and an internal laundry. Complete with internal access to a tandem lock-up garage with storage, this impeccable residence is positioned within a stroll of East Village Shopping and Danks Street's popular eateries, off-leash dog parks, buses and moments to Green Square Station.- Impressive proportions with whole-floor living area- Dedicated lounge and dining bathed in natural light- Designer kitchen, vast stone island/breakfast bar- Premium Miele gas appliances, abundant storage- Effortless flow to n/facing entertainers' courtyard- Generous bedrooms with built-in robes and balconies- Main bedroom with ensuite, separate bath/shower- Study nook, timber flooring, plantation shutters- Deluxe bathrooms, powder room, internal laundry- Plantation shutters, reverse cycle air conditioning- Access via courtyard to beautiful communal gardens- Internal access to tandem garage with storage- Stroll to East Village and Danks Street's eateries- Close to Green Square Station, rapid CBD access