

2 Mountain View Crescent, Mount Warren Park, Qld **RayWhite**

4207

Sold House

Thursday, 14 March 2024

2 Mountain View Crescent, Mount Warren Park, Qld 4207

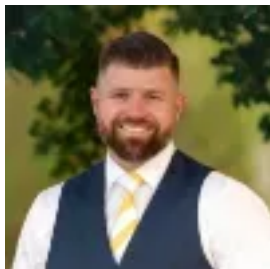
Bedrooms: 4

Bathrooms: 2

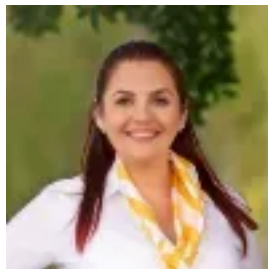
Parkings: 2

Area: 664 m2

Type: House



ROB TINDALL
0738076334



ALANNA TINDALL
0738076334

\$800,000

Welcome to 2 Mountain View Crescent, a stunning 4 bedroom, 2 bathroom house located in the desirable Mount Warren Park area. This beautifully constructed property boasts a spacious land area of 664 sqm, perfect for families or those who love to entertain. Upon entering the home you are greeted with large open expanses. The main living room acts as the heart of the home and allows for large family gatherings and due to its cleverly designed position and floorplan you will experience wonderful breezes through the area. You are also spoiled with an open-plan kitchen/dining and family area which creates a space where the family can easily spread out. The kitchen itself is conveniently located for entertaining and once again positioned for the most functional use. The home is serviced by four very spacious bedrooms and two bathrooms meaning all can live in comfort. All are fitted with built-in wardrobes and ceiling fans. Once you explore and get a feel for the home you will find that it has been designed and constructed with family in mind. Built in 2004, this modern home features a double garage, perfect for storing vehicles or extra storage space. Property features include; Four bedrooms, Two bathrooms, Multiple living areas, Tranquil setting, Spa, Double lock-up Garage, 664 sqm block* The primary bedroom is large and offers air conditioning, a walk-through wardrobe and generously sized ensuite with spa* A further three bedrooms with ceiling fans and BIRs are on offer* The centralised main living area is cleverly positioned to capture the best breezes and also acts as the heart of the home* The large kitchen offers great cupboard and pantry space and is set up for maximum functionality* Complemented in this space is also the open plan dining and family room - currently utilised as the games and entertaining area - the large 8x4 slate pool table can also be kept in the sale as an inclusion* The outdoor alfresco offers a tropical and tranquil oasis and will be the area where you will want to spend so much of your time - also extra inclusions include TV and surround systems!* The garden spaces have been masterfully designed and matured over the years to create a lush, relaxing area that always seems to remain cool in temperature* A therapeutic spa is also on offer - here you will find a covered by a gazebo and fitted out with a television to add to the ambiance* Low-maintenance backyard* Double lock up garage* Internal laundry* Solar power installed* Water tank* Additional property information* No Lease - vacant possession* Rental appraisal - \$650 to \$680* Built 2004* Rates Approx \$950 p/q including water* Very low body corporate fees - Roughly \$1100 PER YEAR * Safe/secure gated estate* Mount Warren Park is situated approximately halfway between Brisbane CBD, Gold Coast, Ipswich, and Redland Bay. It is only a few minutes drive to all the major arterial roads making your commute a breeze. You'll find it is a short walk to Schools, Kindergartens, and a variety of local shops including Coles and IGA. Also conveniently located nearby are Sports fields, Fitstop, gyms, the Mt Warren indoor sports centre, Mt Warren Park Golf Club, and Mt Warren Lanes. Properties like this are seldom available in Mt Warren Park so call Rob & Alanna now for more information. Don't miss out on the opportunity to make this house your home.