

**2 Neath Street, Pelaw Main, NSW 2327**

STONE

**House For Sale**

Thursday, 30 May 2024

2 Neath Street, Pelaw Main, NSW 2327

**Bedrooms: 3**

**Bathrooms: 1**

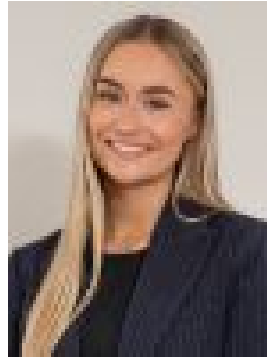
**Parkings: 1**

**Area: 450 m2**

**Type: House**



Renee Bean- Wyper  
0240891122



Jorja Pauling  
0240891122

**\$540,000 - \$580,000**

Comfortably tucked away into a quiet corner of Pelaw Main, with nothing but bountiful nature views to greet you, 2 Neath Street is a home that simply drinks in the atmosphere. Pleasantly appointed, with a large, timber-decked entertaining area and sizable yard, this property offers unmatched peace of mind. It also sits within easy walking distance of Pelaw Main Public School, and just a short 5-minute trip to the Kurri Kurri CBD. A front-facing versatile sunroom greets guests and family members, and guides them onwards to the core, air-conditioned living area. This central space encourages family interaction and is flanked by a dining area and well-appointed kitchen with plenty of cabinetry. Bedrooms are sizable and equipped with built-in wardrobe and ceiling fans, with the primary bedroom boasting a walk-in wardrobe. When not relaxing indoors, you'll find plenty of value in the large, timber deck which offers gorgeous views of the adjacent bush line. The backyard beyond is also quite large and versatile, great for kids or recreational use. Quiet and private location within the corner of Pelaw Main, just a short walk to Pelaw Main Public School - Excellent timber deck offers gorgeous, unobstructed bush views - Air conditioning to core living area - Ceiling fans, built-in/walk-in wardrobes to generously sized beds - Sizable, versatile backyard, suitable for recreation - 17 Solar energy panels