

**2 Newells Road, Beerwah, Qld 4519**



**Sold House**

Saturday, 28 October 2023

2 Newells Road, Beerwah, Qld 4519

**Bedrooms: 3**

**Bathrooms: 1**

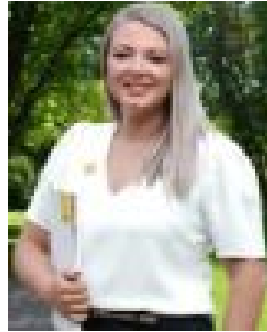
**Parkings: 1**

**Area: 818 m2**

**Type: House**



Donnie Plant  
0435825942



Jasmine Ruhle

**\$650,000**

Donnie Plant and Ray White Beerwah are proud to introduce 2 Newells Road, Beerwah to the market! Offering a great investment or entry-level buy, the property has been affordably priced for definite sale. There is an abundance of warmth and character in this home, so it not surprising that this property has been tightly held by its current owners for more than 23 years. Set on a large 818m<sup>2</sup> block and hosting 3 bedrooms, bathroom, open plan living and dining, this is a dream for any buyer in the market right now. The property is situated only a short distance to the Woolworths Plaza, Glass House Mountains hiking tracks, Australia Zoo, the big kart track, Aussie World, hairdressers, butchers, restaurants, the local pub, children's playgrounds, dog parks, private and public-school bus routes, and has direct access to the highway so that you can head to the best beaches Sunshine Coast has to offer or to Brisbane city for a day out of shopping. The position is perfect! Features of this home include: • Wide front & rear patio • 3 carpeted bedrooms with built-in robes in 2 • Main bathroom with both bath and shower • Separate toilet • Kitchen with electric cooking, fridge space and pantry space • Open plan dining room • Spacious air-conditioned living area • Laundry area with direct outdoor access • Huge secure outdoor entertaining area • Remote single garage with internal access • Wide garden shed • 818m<sup>2</sup> of land • Side access • Landscaped with low maintenance gardens • Approx rental return: \$580.00 - \$630.00 p/w • 25 mins to the stunning Sunshine Coast beaches • 1 hour to Brisbane To truly appreciate this home and all the benefits on offer, an inspection is highly recommended. Call Donnie Plant on 0435 825 942 to book a private inspection! \* Disclaimer: Whilst every care has been taken in the preparation of this marketing, Ray White Beerwah will not be held liable or responsible for any errors in the information displayed. All parties should carry out their own enquiries.