

2 Olwyn Place, Earlwood, NSW 2206



Sold House

Tuesday, 20 February 2024

2 Olwyn Place, Earlwood, NSW 2206

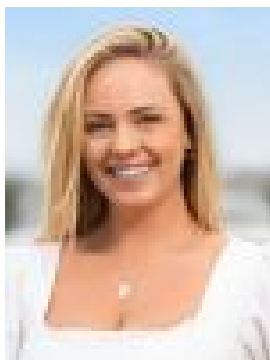
Bedrooms: 5

Bathrooms: 2

Parkings: 2

Area: 481 m2

Type: House



Sarah Foetschl
0295293633



Marc Warren
0295293633

\$2,499,000

Peacefully backing onto Cooks River, this double brick home presents a prime opportunity for families, downsizers and investors. It's on a rear north west 481sqm level block next to Wanstead Reserve Park, minutes to Wolli Creek and Marrickville shops.- Light filled open living and dining zones flowing outdoors- Generous alfresco deck and swim spa for relaxing/entertaining- Sunny north west yard with mature gardens, access to river- Bright gas kitchen showcases ample benchspace and storage- Four bedrooms with built-in wardrobes, main offers ensuite- Skylit fourth bedroom has own balcony and attic storage space- Flexible study/fifth bedroom, full main bathroom, fresh paint- Ducted air conditioning, timber floors, lock-up garage, solar panels- Stroll to parks, Tempe/Wolli Creek/Turrella train stations- Close to Undercliffe Public, Tempe Public, Earlowood Public