

# 2 Parkwood Court, Port Macquarie, NSW 2444



## Sold Residential Land

Saturday, 9 December 2023

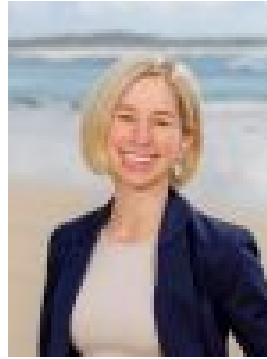
2 Parkwood Court, Port Macquarie, NSW 2444

Area: 797 m2

Type: Residential Land



Chris Koch  
0427831100



Abby Koch  
0488762600

## Contact agent

Rates \$2,700 pa | Land 797 sqm It's not very often you come across a vacant block of this size in such a picturesque setting that is so close to beaches, schools, and the CBD. It's a beauty! Located on the corner of Parkwood Court and McLaren Drive, this 797m<sup>2</sup> block is positioned directly across the road from a Koala Reserve. Take a drive around this area, and you will soon discover this is an exceptionally house-proud neighbourhood. An easy lot to navigate, combined with its prime corner setting, this block offers great potential for a duplex project (STCA). It's the perfect location to take advantage of sunshine, northern light, and coastal breeze. With its generous size, proximity to amenities, and stunning surroundings, this parcel of land is a rare find and won't last for long! Embrace the best of both worlds - a peaceful haven surrounded by nature, yet just minutes from all the conveniences of modern living. + Corner block spanning over 797m<sup>2</sup> + House-proud street opposite Koala Reserve + Great potential for a duplex project (STCA) + Proximity to schools, beaches, sporting fields + Prime location to build your dream home Disclaimer: All information contained herein is gathered from sources we deem to be reliable. However, we cannot guarantee its accuracy and interested persons should rely on their own enquiries.