

**2 Parri Crescent, New Port, SA 5015**



**House For Sale**

Thursday, 29 February 2024

2 Parri Crescent, New Port, SA 5015

**Bedrooms: 3**

**Bathrooms: 2**

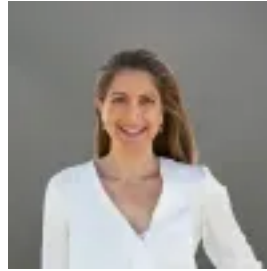
**Parkings: 2**

**Area: 144 m2**

**Type: House**



Rosemary Auricchio  
0883473666



Josie Auricchio  
0883473666

## **Auction | Thu 14th Mar at 6:30pm In-Room (USP)**

Auction Location: In-Room, The Lakes Resort Hotel - 141 Brebner Drive, West Lakes Nestled in the tranquil precinct of New Port, SA, this resplendent three-bedroom residence at 2 Parri Crescent epitomizes luxury living with an idyllic location. Enviably set over three majestic levels, each space is meticulously crafted to offer both grandeur and comfort, providing a serene retreat from the bustling world. This enchanting house is not just a dwelling, but a statement of elegance and a haven for those who appreciate the finer things in life. The expansive views of Port River create a canvas of tranquility, with the shimmering water providing a backdrop that changes with the passing of each hour, bestowing an ever-changing vignette of nature's beauty. The design seamlessly blends functionality with aesthetic appeal, featuring modern fittings and finishes that are both striking and enduring. Each level of the home offers a sense of scale and openness, without sacrificing privacy or coziness. With a generous allocation of living spaces, this abode is tailored to entertain, relax, and indulge in the peaceful surroundings, while also providing the practicality needed for day-to-day living. Key Features include:- Three spacious bedrooms, each providing a comfortable and private retreat.- Built-in robes featured in bedrooms for ample and organized storage.- A total of 2.5 bathrooms, ensuring convenience and functionality.- A modern kitchen equipped with a dishwasher, blending convenience with style.- Living room with feature log fireplace- Air conditioning for ultimate climate control throughout the residence.- Remote-controlled double garage for effortless access and security.- Picturesque balconies offering an outdoor escape with stunning views.- Proximity to shops and transport, ensuring all amenities are within easy reach.- The enviable location near the river, enhancing the allure of this exquisite property.- Marina Berth- Full use of gym facilities Echoing the undeniable allure of New Port's coastal charm, this house offers a living experience that is as indulgent as it is comfortable. With its thoughtful layout and breathtaking vistas, this property presents a unique opportunity for discerning buyers seeking a sophisticated and enriched lifestyle by the waterside. Disclaimer: Any prospective purchaser should not rely solely on 3rd party information providers to confirm the details of this property or land and are advised to enquire directly with the agent in order to review the certificate of title and local government details provided with the completed Form 1 vendor statement. All land sizes quoted are an approximation only and at the purchasers discretion to confirm. All information contained herein is gathered from sources we consider to be reliable. However, we cannot guarantee or give any warranty about the information provided. Interested parties must solely rely on their own enquiries. RLA 175322