

# 2 Red Gum Close, Keysborough, Vic 3173

**buxton**

## Unit For Sale

Friday, 3 May 2024

2 Red Gum Close, Keysborough, Vic 3173

**Bedrooms: 3**

**Bathrooms: 1**

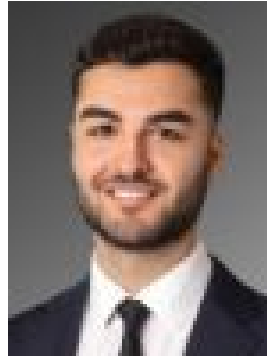
**Parkings: 2**

**Area: 297 m2**

**Type: Unit**



Ozan Kanbur  
0403644379



Emrah Dilbaz  
0422054302

**\$600,000 - \$630,000**

Embrace a vibrant lifestyle in the heart of Keysborough, moments from various esteemed schools and recreational delights for day and night. Peaceful, private, freestanding and offering a spacious, well-considered layout - this single-level sanctuary nestled amongst a quiet enclosure of community spirit will appeal to first home buyers, investors and astute re-sizers. Discover the exclusive comforts of this remarkable location in Parkmore Gardens Estate. Enjoy the amenities, including a community hall, tennis court, and swimming pool, set amidst lush greenery and connecting concrete pathways. With ample visitor parking and a children's playground, this estate offers the perfect balance of entertainment and convenience. A charming entrance welcomes the immediate living domain, where high ceilings embrace airy spaces filled with natural light. Towards the front, a light-laden master bedroom unveils a built-in robe with two-way access to a central bathroom featuring a soothing bath and separate toilet. Further along, two additional bedrooms also with built-in robes are on offer. Complementing a timeless palette, a sweep of neutral hues warms this home, designed to impress with a bright kitchen complete with an electric stove, oven, grill and ample storage space. Sliding doors lead to a courtyard that complements its paved entertainment spaces with an established, easy-care garden that gives you enough space and greenery to enjoy without all the maintenance. A heating/air conditioning unit, underfloor heating, a full laundry with external access, a carport, and a garage with additional driveway car accommodation complete the thoughtful curation of this exceptional home. Just a few moments from your doorstep, you'll find numerous amenities to ensure easy day-to-day living. Proximity to Keysborough & Resurrection Primary School and just minutes from the prestigious Haileybury & Lighthouse Colleges plus Parkmore Shopping Centre - your commutes will be efficient with the Dandenong Bypass, Eastlink, Cheltenham Road bus routes.