

2 Seaspray Court, Hastings, Vic 3915



Sold House

Friday, 1 September 2023

2 Seaspray Court, Hastings, Vic 3915

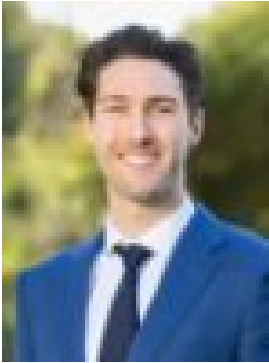
Bedrooms: 3

Bathrooms: 2

Parkings: 2

Area: 646 m²

Type: House



Terry Wheeler

0397812111

\$665,000

Freshly renovated with a stylish seaside aesthetic at one with this Western Port Bay location, enjoy carefree coastal living from this light-filled and wonderfully affordable three-bedroom home just steps from King Creek Bushland Reserve and its walking trails. Within the family-friendly Wallaroo Estate, this quiet enclave is ideal for every age and stage with both the general store and Wallaroo Primary School in strolling distance, while Western Port Secondary College is around 15 minutes' walk (or 5 minutes' bike ride) for the teens. Crisp tones and sanded timber floors enhance the natural light and laid back ambience throughout the single-level residence, which flaunts an expansive 8-metre open plan living and dining zone flowing out through sliding glass to a multipurpose room that could be employed as a study, sunroom, playroom or enclose alfresco space for entertaining. Stainless-steel pairs with natural timber in the contemporary kitchen offering a freestanding oven with gas cooktop, a breakfast bar and chic matte-black sink and tapware, while outside hosting will be a breeze on the vast wraparound deck with pergola spilling onto a lush green lawn for year-round barbies and kicking the footy around. A lovely master bedroom has a walk-in robe and private ensuite in this practical layout, which includes two junior bedrooms with built-in robes, a full second bathroom, ducted heating, a split-system, ceiling fans, a garage, side-gate access with ample room for a boat, caravan or trade vehicles, and a second garage-come-mancave in the rear with a built-in bar. Just a few minutes' drive to the major shopping of Hastings town centre, the train station and foreshore, the location is surrounded by equestrian facilities, wineries, surf breaks and yachting facilities and is around a 1 hour drive from Melbourne. Should you require any further information, please do not hesitate to Terry Wheeler on 0417 397 806 anytime. Please note Photo ID is require for all inspections.