

2 Thalia Court, Corinda, Qld 4075



House For Sale

Wednesday, 22 November 2023

2 Thalia Court, Corinda, Qld 4075

Bedrooms: 4

Bathrooms: 3

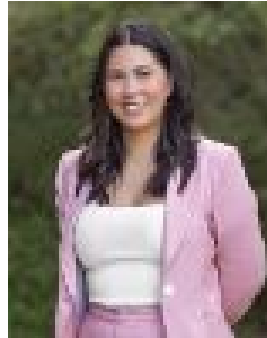
Parkings: 2

Area: 714 m2

Type: House



Lisette SchultsRand
0488518188



Shay Watene
0451154558

Auction

ONLINE AUCTION 5.00pm Wednesday 13th December 2023 Go To:

[https://www.raywhite.com/privacy](https://www.facebook.com/raywhitesherwoodgracevillesocials/Showcasing%20over%2050%20metres%20of%20commanding%20frontage%20on%20an%20exquisite%20714sqm%20corner%20allotment%2C%20this%20inspired%20entertainer%20resides%20in%20an%20exclusive%20pocket%20of%20Corinda%2C%20neighbouring%20beautiful%20parks%20and%20sports%20clubs.%20Perfect%20for%20buyers%20looking%20to%20embrace%20outdoor%20living%20and%20recreation%2C%20this%20masterpiece%20of%20style%20and%20seclusion%20is%20nestled%20amongst%20gorgeous%20greenery%20and%20unveils%20a%20resort-style%20retreat%20that%20is%20sure%20to%20be%20the%20envy%20of%20family%20and%20friends.%20Polished%20timber%20floors%20adorn%20the%20open-plan%20sitting%2C%20living%20and%20dining%20areas%2C%20which%20form%20the%20heart%20of%20this%20stunning%20home.%20Providing%20plenty%20of%20gathering%20space%20and%20relaxed%20comfort%2C%20this%20oasis%20invites%20lots%20of%20light%20and%20flows%20into%20the%20culinary%20kitchen%2C%20revealing%20sleek%20stone%20benchtops%20and%20premium%20appliances.%20The%20bar%20and%20integrated%20seating%20add%20a%20touch%20of%20luxury%20for%20indoor%20entertaining%2C%20while%20the%20rumpus/games%20room%20provides%20a%20hideaway%20for%20kids%20and%20teens.%20The%20splendour%20continues%20outdoors%20with%20a%20paved%20terrace%20and%20outdoor%20kitchen%20accommodating%20alfresco%20hosting%20and%20dining.%20Extending%20to%20the%20lush%20lawns%2C%20glistening%20pool%2C%20spa%20and%20tropical%20palms%2C%20this%20haven%20will%20create%20the%20feeling%20of%20being%20transported%20to%20an%20island%20retreat.%20Three%20bedrooms%20reside%20upstairs%20and%20open%20to%20an%20elevated%20balcony%20overlooking%20the%20pool.%20The%20master%20unveils%20a%20walk-in%20robe%20and%20a%20luxurious%20dual%20vanity%20ensuite%2C%20while%20the%20other%20bedrooms%20boast%20built-in%20robes%2C%20study%20nooks%20and%20access%20to%20the%20main%20bathroom.%20Downstairs%20a%20fourth%20bedroom%20serves%20as%20a%20guest%20suite/second%20master%20with%20a%20walk-in%20robe%2C%20ensuite%20and%20garden%20views.%20A%20home%20office%2C%20powder%20room%20and%20double%20garage%20also%20feature%20on%20this%20lower%20level.%20Property%20features:-%20714sqm%20corner%20allotment%20offering%20peaceful%20living- Living/dining/sitting area and a rumpus/games room- Gourmet kitchen, bar and outdoor kitchen with BBQ- Alfresco balcony, terrace, pool, spa and private yard- 4 bedrooms, home office and 3.5 bathrooms- Double-car garage with built-in storage- Air-conditioning and ceiling fans - Solar and gas heating to the pool and spa.A paradise for recreation lovers, this home is perched on a peaceful street with Benarrawa Park, Ambiwerra Tennis Centre and Corinda Bowls Club right around the corner. Cliveden Avenue Reserve and Corinda Golf Course are also within easy walking distance and perfect for weekends with family and friends. Kids can walk to Corinda State School, Corinda High School, Eden Academy Early Learning, St Aidan's Girl's School and St Joseph's Primary School, all less than 1.1km away. Only 850m from Corinda's lively precinct, featuring cafes, restaurants, shops, Coles and Corinda station - you will love the relaxing lifestyle.DISCLAIMER: Whilst all care has been taken to ensure that the information provided herein is correct, we do not take responsibility for any inaccuracies. Accordingly, we recommend that all interested parties should make their own enquiries and due diligence to verify the information. Any personal information provided to Cameron Crouch Property T/As Ray White Sherwood, will come under the terms set out in our Privacy Policy, which can be found here for your convenience: <a href=).