

2 The Crescent, Port Melbourne, Vic 3207

WHITEFOX

Sold House

Thursday, 7 March 2024

2 The Crescent, Port Melbourne, Vic 3207

Bedrooms: 3

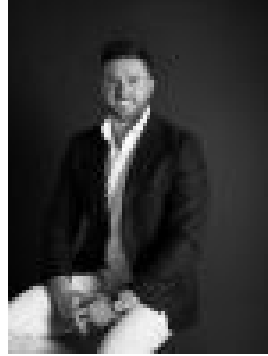
Bathrooms: 2

Parkings: 2

Type: House



Cheyne Fox
0410216156



Peter Zervas
0405682173

\$2,300,000

THE DEALAn iconic Beacon Cove home, with a clever floor-plan offering abundant natural light and space and stunning vistas throughout. This property spans three superb storeys and is perfectly nestled in a picturesque pocket, right on the doorstep of Port Phillip Bay and only moments from the CBD. Upon entry, the large yet warm and inviting lounge welcomes you. A central fireplace is perfect for relaxing in cooler months, while the outdoor area adds to the welcoming ambience. The first level is dedicated to living and offers incredible indoor/outdoor flow, with an open lounge featuring an entertainers terrace. A formal dining zone is separated from the kitchen, offering harmonious living. The kitchen boasts Miele appliances, including a conventional oven, steam oven, dishwasher, and gas cooktop. This area is serviced by a generous terrace equipped with a gas line for BBQs. Head upstairs, and you will find three large bedrooms, all with built-in robes. The huge master bedroom with a balcony overlooking the city skyline, boasts a walk-through robe and sparkling ensuite, while a fully tiled central bathroom services the others. Additional features include a secure lock-up double garage, ducted heating and cooling with additional reverse cycle units on the second level a secure alarm system, Euro laundry, and central powder rooms.**SEALS THE DEAL**Low maintenance living by the bay, moments from the light rail to the city, and a stroll to all of the amenities of bustling Bay St and beyond. Beacon Cove also features its dedicated and highly regarded medical and dental clinics, bayside restaurants, and cafes.