

**20/23 Ormond Street, Ashfield, NSW 2131**



**Sold House**

Tuesday, 13 February 2024

20/23 Ormond Street, Ashfield, NSW 2131

**Bedrooms: 2**

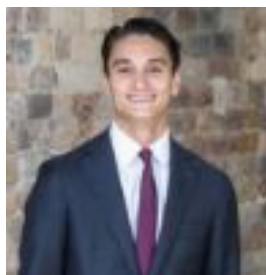
**Bathrooms: 1**

**Area: 74 m2**

**Type: House**



Lars Foged



Henry Archee  
0424489520

**\$970,000**

Smart design and a premium parkside location ensure this stylishly renovated top floor apartment delivers a fantastic lifestyle. It features a fresh single-level layout that provides an easy-care executive home with chic modern interiors, elevated park outlooks and a quiet street position directly opposite Ashfield Park. This gorgeous 1960s security building is even further enhanced by a top location that's walking distance to Summer Hill & Haberfield village, as well as all of Ashfield's amenities. A private top floor position with virtually no common walls. Elevated easterly aspect and leafy outlooks over the treetops. Bright and airy living and dining area with sleek bamboo flooring. An easy flow to a large north-facing balcony with park views. Designer kitchen with Caesarstone benches and gas cooktop. Two bright double bedrooms plus a renovated full bathroom. In a well-maintained boutique block with intercom entrance. Easy walking distance to city-bound buses and train stations.