

**20-28 Lethbridge Street, Penrith, NSW 2750**



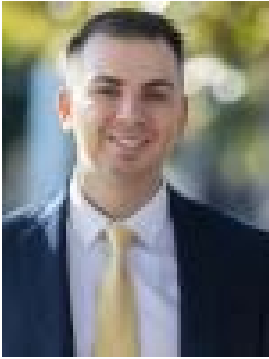
**Residential Land For Sale**

Monday, 15 April 2024

20-28 Lethbridge Street, Penrith, NSW 2750

Area: 3137 m2

Type: Residential Land



Peter Diamantidis  
0296234033



Peter Sassine  
0424896600

## Expression of Interest

We are pleased to present 20-28 Lethbridge Street, Penrith brought to you by award winning agent Peter Diamantidis and Peter Sassine. This is a rare opportunity to secure a DA APPROVED unit site for 81 units in PRIME LOCATION of Penrith! DA & CC Approved, the current owner has paid for all contributions, house has been demolished and ready to build! • Sought after R4 High Density Residential Zoning • Boutique Residential Flat Building consisting of 81 units • 13 x 1 Bedroom Units • 59 x 2 Bedroom Units • 9 x 3 Bedroom Units • Level and cleared vacant block • 79.99 W x 39 Length • Contributions paid • House Demolished

What makes this a premium location is within minutes you could be at: • Westfield Shopping Centre • Penrith Train Station • Nepean Hospital, Medical Centres & Specialists • Nepean River, Cafes and walking paths • Kmart & Coles • M4 Motorway to Sydney and the Blue Mountains • The Western Sydney Airport • Penrith Selective High School and Penrith Public School • UWS University - Kingswood and Werrington Campus • Panthers - World of Entertainment

Disclaimer: The above information has been gathered from sources that we believe are reliable. However, we cannot guarantee the accuracy of this information and nor do we accept responsibility for its accuracy. Any interested parties should rely on their own enquiries and judgment to determine the accuracy of this information for their own purposes. Images are for illustrative and design purposes only and do not represent the final product or finishes.