

20/300 The Esplanade, Miami, Qld 4220



Unit For Sale

Tuesday, 14 May 2024

20/300 The Esplanade, Miami, Qld 4220

Bedrooms: 2

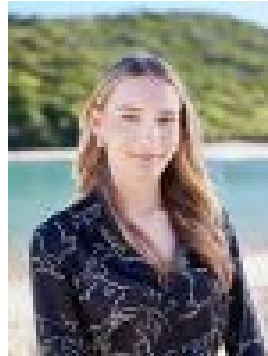
Bathrooms: 2

Parkings: 1

Type: Unit



Will West  
0755766616



Sol Brown  
0490774636

## Offers over \$990,000

Nestled on The Esplanade, between picturesque North Burleigh and South Miami beaches, this top-floor two-bedroom apartment offers superb ocean and hinterland views. Enjoy the benefits of beachfront living here with immediate access to the pristine shoreline, North Burleigh Lookout and parks. The spacious, solid brick construction apartment boasts an air-conditioned open plan living and dining area with expansive Hinterland views. The spacious renovated kitchen features stone benchtops, quality appliances and ample storage. Both bedrooms are filled with natural light and include built-in wardrobes and ceiling fans, with the master bedroom offering an ensuite and panoramic hinterland view. For added convenience, there is a single car space in the secure underground basement. Situated in the sought-after 'Burleigh Point' building, this exclusive complex features an in-ground pool, spa, and barbecue area surrounded by lush gardens. You can't beat this location with Miami One shopping centre just around the corner including Coles, Aldi, cafes, restaurants, shops, public transport and future light rail. If you feel like venturing into town, it's just a short, easy stroll to James Street, Burleigh's trendy shopping and dining precinct and just a stone's throw to North Burleigh Lookout, world renowned surf breaks & national park walking tracks. - Premier location overlooking Burleigh beach with superb ocean views from the balcony - Generous solid brick construction top floor apartment - Large entertainers balcony where you can enjoy watching the waves crash & the sunrise - Spacious air conditioned open plan living & dining area with expansive hinterland outlook - Good size kitchen with stone bench tops, quality appliances, plenty of storage & bench space - Two generous light filled bedrooms with b/ins & fans, main bedroom with ensuite & views - Main bathroom with bathtub & a separate laundry - Single car space in secure basement - Well maintained resort complex 'Burleigh Point' with pool, spa & BBQ area - Short walk to shops, cafes & restaurants, footsteps to patrolled surf beaches & parks