

# 20/318 Canning Highway, Bicton, WA 6157



## Unit For Rent

Saturday, 27 April 2024

20/318 Canning Highway, Bicton, WA 6157

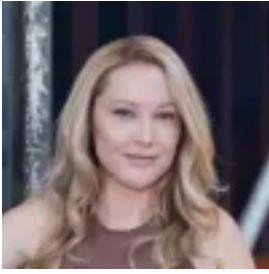
Bedrooms: 1

Bathrooms: 1

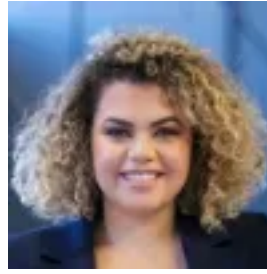
Parkings: 1

Area: 41 m2

Type: Unit



Kasey Bull  
0893855559



Liliana Talemaitoga  
0893855559

**\$420 per week**

Two apartments available! Unit 20 & Unit 26! Recently renovated apartment in the heart of Bicton is perfect for anyone wanting a lock and leave lifestyle. Located in walking distance to major shopping, cafes and a medical centre, this property is certainly in the middle of it all. Set back from the highway, the complex has a lovely open feel with an under cover car park and visitor parking, it is certainly a gem. Features Include:- Renovated kitchen and bathroom- Light and bright- Tiles throughout- Good storage Located in close proximity to:- Many restaurants and cafes along Canning Highway- Leopold Hotel- Main bus routes to Fremantle and the city- Walking distance to Melville Plaza- Parks and recreation areas- Point Walter Medical Centre- Walking distance to the river- Bicton Primary School To arrange a viewing please refer to our 'Open For Inspection' times or email [kasey@cyproperty.com.au](mailto:kasey@cyproperty.com.au) and [liliana@cyproperty.com.au](mailto:liliana@cyproperty.com.au) from Caporn Young Property Management PTY LTD. We are more than happy to do a virtual inspection for you if you can't attend a private inspection. Please just ask. These details are provided for information purposes only and do not form part of any contract and are not to be taken as a representation by the seller or their agent. Disclaimer: The particulars of this listing have been prepared for advertising and marketing purposes only. We have made every effort to ensure the information is reliable and accurate, however, clients must carry out their own independent due diligence to ensure the information provided is correct and meets their expectations.