

20/8 Saint Kilda Court, Durack, Qld 4077



Townhouse For Sale

Wednesday, 22 November 2023

20/8 Saint Kilda Court, Durack, Qld 4077

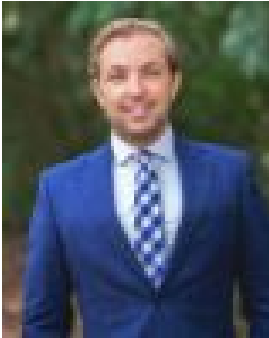
Bedrooms: 3

Bathrooms: 2

Parkings: 2

Area: 134 m2

Type: Townhouse



Lachlan Humble
0438688347

FOR SALE

Boasting a sought-after location, this beautiful townhome presents the perfect house alternative for owner-occupiers and investors seeking a property close to parkland, schools and transport. Residing within a wonderful complex and privately positioned at the end of a row next to greenery, buyers will love the relaxed lifestyle and blissful surroundings. The low-maintenance layout has been designed for maximum space, featuring an open-plan living and dining area revealing tiled floors, air-conditioning and a study nook. The adjoining kitchen is well-appointed with large stone benchtops and captures views across the private undercover patio, offering a retreat for outdoor living, planting gardens and playing with young kids. Three good-sized bedrooms and two modern stonetop bathrooms are upstairs, and an additional toilet, laundry and lock-up garage are below. All three bedrooms include built-in robes, and the main bedroom will impress with its exclusive ensuite and air-conditioning. Property features:- Private townhouse at the end of a row neighbouring greenery- Open living/dining area with a study nook and air-conditioning- Stylish stonetop kitchen featuring stainless steel appliances- Peaceful alfresco patio for outdoor living and entertaining- Three bedrooms and two modern bathrooms upstairs- Master bedroom includes an ensuite and air-conditioning- Third toilet and laundry downstairs- Lock-up garage and under-stair storage- Ceiling fans and built-in robes in all bedrooms- Security screens across the home- Sought-after complex with ample visitor parking Positioned in a coveted pocket of Durack, this townhouse is around the corner from beautiful parks, playgrounds and bike paths, and a leisurely stroll to walking trails through the wetlands. Just 1.3km from Durack State School, 2km to Inala Plaza, 2.2km to Blunder Road shopping village, close to bus stops and moments from the Ipswich Motorway - shopping, dining and transport are made easy. DISCLAIMER: Whilst all care has been taken to ensure that the information provided herein is correct, we do not take responsibility for any inaccuracies. Accordingly, we recommend that all interested parties should make their own enquiries and due diligence to verify the information. Any personal information provided to Cameron Crouch Property T/As Ray White Sherwood, will come under the terms set out in our Privacy Policy, which can be found here for your convenience: <https://www.raywhite.com/privacy>.