

20/9 Grace Campbell Crescent, Hillsdale, NSW 2036

Apartment For Rent

Wednesday, 31 January 2024

20/9 Grace Campbell Crescent, Hillsdale, NSW 2036

Bedrooms: 2

Bathrooms: 1

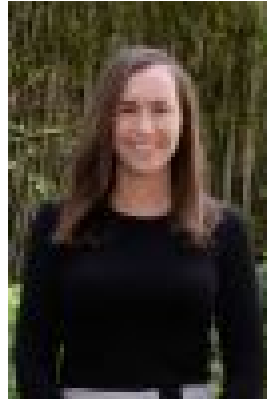
Parkings: 1

Area: 95 m2

Type: Apartment



Daniel Moddel
0283470700



Samantha Hunnisett
0283470700

\$700 per week

Exceptionally quiet and private with attractive parkland views, this well-presented apartment is in a convenient locale. Set at the rear of the "Suffolk Court" complex of two full brick security buildings, the mid-floor apartment offers spacious light-filled living/dining with balcony plus lock-up garage. Metres to reserves, pocket parks and playgrounds, this peaceful retreat is just a 10-minute walk to Matraville village, Southpoint Shopping Centre and City buses with easy access to beaches, Port Botany, the airport & M1 to the City. • L-shaped living with reverse cycle air conditioning • Covered balcony • Gas kitchen with stainless steel appliances, internal laundry • Two double bedrooms, one with built in wardrobe and open leafy outlook • Freshly painted. Bathroom with bath & separate shower • Walk-up security block of 12; lock up garage • Rear garden & drying area, adjacent to Reserve • Walk to village shops, cafes, eateries, supermarket • Close to Heffron Park, 1km to Westfield Eastgardens • 10 minutes to Maroubra Beach, National Park & walks • Convenient to high schools, sports facilities & UNSW