

**20 Antonino Drive, Rosebery, NT 0832**



**Sold House**

Monday, 14 August 2023

20 Antonino Drive, Rosebery, NT 0832

**Bedrooms: 4**

**Bathrooms: 2**

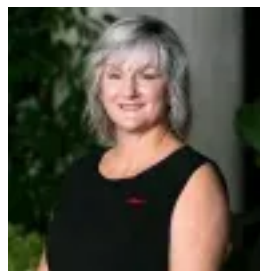
**Parkings: 4**

**Area: 831 m2**

**Type: House**



Gennie Cox  
0411151911



Sue Cox  
0889315000

**\$640,000**

Situated within the leafy, suburban setting of Rosebery, this spacious four-bedroom residence has a warm welcoming vibe, while remaining crisp and contemporary throughout. Designed with the family in mind, the home features an expansive open-plan living area, centred around the well designed kitchen. Flooded with natural light, this space opens out to an entertainer's alfresco and huge, fully fenced yard, complete with resort-style pool and side access. - Fabulous family home on large open land area- Expansive layout accentuated by light, bright, well-designed spaces- Flow-through living space made up of media room, family room and dining area - Stylish kitchen features waterfall island, induction cooktop & stainless-steel appliances - Superb entertaining space provided within covered alfresco - Vast backyard features rolling grassy lawns and a sparkling freeform pool - Large master with walk-in robe and ensuite - Three additional bedrooms, each with built-in robe - Modern family bathroom with bath, shower and separate WC - Double lock-up garage & side access to yard for boat/caravan Beautifully presented inside and out, this home delivers effortless style within a carefully considered layout, creating a family home that feels instantly appealing. Framed by manicured lawns and lush landscaping, the home will have you admiring its neat, contemporary façade as it draws you in to its attractive interior, where you uncover a open plan living space accented by a neutral palette. Expanding over 265sqm., the layout within feels spacious within its distinct zones, offering up a media room at the front, flowing through to a dining area and family space at the back. At the hub of the home, the family kitchen awaits, complete with handy breakfast bar dining and modern stainless-steel appliances. A wonderful entertainer, the home spills out to a covered patio, perfect for dining and relaxing as you entertain friends and family. From here, you can marvel at the sparkling inground pool set within a wraparound, fully-fenced yard, which remains low maintenance despite its beauty. Back inside, the interior is completed by a master with walk-in robe and ensuite at the front of the home, and three additional robed bedrooms grouped around a family bathroom towards the back. Adding further value are features that include a laundry, split-system air-conditioning, solar, and a double lock-up garage with internal access. Surrounded by other quality homes on a level 831sqm. parcel, the home appeals further with its location, set within walking distance of local parklands, schools and transport, and just five minutes in the car from Palmerston shops. Don't miss out on this fantastic family home – arrange your inspection today.