

20 Birrell Street, Leichhardt, Qld 4305



Sold House

Thursday, 7 March 2024

20 Birrell Street, Leichhardt, Qld 4305

Bedrooms: 4

Bathrooms: 1

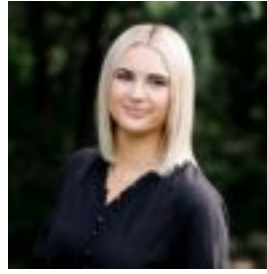
Parkings: 1

Area: 1115 m2

Type: House



Ben Ramsey
0411428474



Taylah Sherrin
0457047720

\$566,000

HUGE 1,115m² subdividable Block! Value packed, not to be missed and resting on a very generous 1,115m² block! Easily one of the neatest homes in Leichhardt and located just minutes from all the amenities that you could need such as schools, local shops, parks and the Ipswich CBD. From the pine floorboards that flow throughout the home itself to the large, updated kitchen with ample storage, this home is sure to tick all of the boxes! For prospective buyers looking to enter the Ipswich real estate market, this property presents an enticing opportunity. Its attractive features, coupled with the growing demand in the area, make it an ideal choice for first-time homebuyers seeking value and potential appreciation. Furthermore, this home would have a great addition for a savvy investor to capitalize on the property's rental income potential and long-term growth prospects, adding diversity to their investment portfolio. This property is currently tenanted until July 2024. Key Features:- Four good sized bedrooms (fourth room could be utilized as a study/extra bedroom)- Neat & tidy bathroom- Ceiling fans- Air-conditioning- Polished pine floors throughout- Huge fully fenced 1,115m² block- Side access on both sides of property- Single car carport- Shed- The home is currently tenanted until July 2024 Location:- Leichhardt State School - 0.7km*- Immaculate Heart Catholic Primary School - 1.5km*- Ipswich CBD - 3.7km*- Riverlink Shopping Centre - 4.9km*- Amberly Air Base - 8km** Approximate Properties like this do not last long in the current market! If you would like more information, please call Ben Ramsey on 0411 428 474 or Taylah Sherrin on 0457 047 720 today. We look forward to meeting you at one of our open homes! Chat to you soon.