

20 Cashmere Drive, Doreen, Vic 3754

CHWYLA

Sold House

Friday, 3 November 2023

20 Cashmere Drive, Doreen, Vic 3754

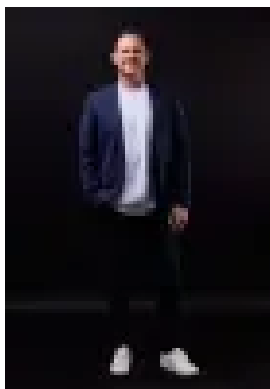
Bedrooms: 3

Bathrooms: 2

Parkings: 2

Area: 454 m2

Type: House



Paul Chwyla
0386009995



Troy Hodge
0386009995

\$777,000

Make more of : 454m² block Reserve facing Three bedrooms Two bathrooms with stone benchtops Two living areas Study Double garage with storage racking Alarm system High ceilings Square set cornices Downlights Timber engineered boards Fresh paint Double blinds Stone kitchen benchtops 900mm appliances Dishwasher Plumbed fridge space Walk-in pantry Oversized shower with rainwater showerhead Bath Master with walk-in robe Two bedrooms with double door robes Large laundry with double door storage Ducted heating Split system Ceiling fans Covered alfresco Concrete to side of home Low maintenance landscaping Quiet street 650m to Overland Drive Playground 950m to Collingrove Park and Playground 1.6km to Laurimar shops The initial appeal – Features like these: stone benchtops, a big walk-in pantry, timber stackers into the outdoor entertaining area and a private backyard with neat, low maintenance landscaping and lawn for the kids and pets. You'll also be scooting distance for little legs to Overland Drive playground [650 metres] and walking distance to the Laurimar shops. The main attraction – A beautifully maintained family home, on a quiet street facing a reserve. You'll be all about the high ceilings, square set cornices, timber engineered boards, fresh paint, and – the best bit - the luxury of having two separate living areas plus a study.