

20 Cavendish Street, Pimlico, Qld 4812



House For Rent

Thursday, 14 December 2023

20 Cavendish Street, Pimlico, Qld 4812

Bedrooms: 4

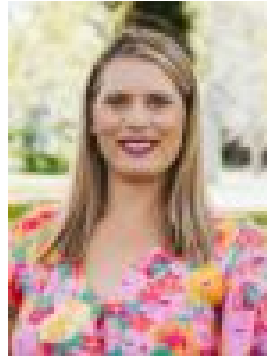
Bathrooms: 2

Parkings: 2

Type: House



Jacquelyn Shimeld
0747504000



Vittoria Marques
0416019839

\$490 per week

Welcome to 20 Cavendish Street. Only 7 years old and in one of the most central locations Townsville has to offer! This remarkable four-bedroom home presents a perfect blend of convenience and style. The master bedroom boasts its own ensuite, complete with a rejuvenating rain shower, while the tiles stretching to the ceiling exude elegance and sophistication. Split air-conditioners are thoughtfully placed throughout the house, ensuring a pleasant atmosphere no matter the season. The heart of the home lies in its spacious kitchen, where a generously long bench-top provides ample space for preparing meals, sharing stories, and creating cherished memories with family and friends. The kitchen truly is the hub of this home, inviting both culinary creativity and warm gatherings. As you explore further, you'll appreciate the plush carpet that graces the bedrooms, creating a cozy and inviting ambiance. Each room is a personal haven, a place to unwind and recharge. Step outside into the backyard - a generous expanse that invites outdoor living and relaxation. It's a canvas ready to transform into your very own outdoor oasis, perfect for gatherings, play, and simply enjoying the fresh air. Nestled at the heart of Pimlico, the location of this unit is truly exceptional. You'll revel in the unmatched convenience it offers, with a plethora of amenities within arm's reach. From charming cafes and unique boutiques to parks, educational institutions, and efficient transportation options, everything you desire is mere moments away.

Key Features:

- 4 Bedroom home in a central location
- Split air-cons and ceiling fans throughout
- Built-in robes
- Large yard with double gate entrance
- Shed

Key Amenities:

- Shopping centres like Stockland Townsville and Castletown Shopping World for all your retail needs
- Anderson Park nearby, offering green spaces, walking trails, and picnic areas
- Medical facilities and healthcare centres for convenient access to healthcare services
- Schools and educational institutions catering to all ages
- Good transport links with bus stops and train stations for easy commuting

Available Now! Don't Delay, Inspect Today!

Please note - All parties should make and rely upon their own enquiries in order to determine the accuracy of the information supplied. Some file photographs in use may have been taken some time ago or modifications have been conducted at the property since the photography. Please rely on your own inspection and investigations to determine if this property is suitable for your requirements and the information provided is general in nature. Ray White Townsville