

20 Clare Crescent, Berkeley Vale, NSW 2261



Sold House

Friday, 22 September 2023

20 Clare Crescent, Berkeley Vale, NSW 2261

Bedrooms: 3

Bathrooms: 1

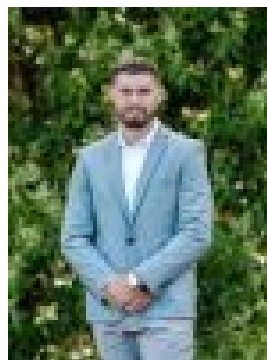
Parkings: 2

Area: 727 m2

Type: House



Ian Boyle
0243139043



Blair Ryan
0416946406

\$853,000

Looking for a home that's different from the rest you can't look past this charming three-bedroom cottage featuring high ceilings with decorative cornices and original timber floors throughout. The large bullnose veranda at the front of the house is perfect to enjoy the morning sun with the large covered outdoor entertaining area at the rear capturing all the afternoon sun. The level 727 sqm block is perfect for future extensions or a swimming pool with the studio being ideal for a workshop or home office. The carport offers parking for multiple vehicles with additional space to park the boat or caravan.

- Three spacious bedrooms
- One bathroom with a second toilet
- Two covered outdoor entertaining areas
- Open plan kitchen/dining with gas cooking
- Study with a large living space
- Fully fenced Level 727 sqm block with studio/workshop at the rear
- Covered parking for multiple vehicles, boat, and caravan.
- Airconditioning and town gas
- Original timber floors throughout
- Investors can expect up to \$700 per week.
- Walk to Tuggerah Lake
- Minutes to local beaches and M1

Located in a quiet and popular part of Berkely Vale, this gorgeous and versatile home will not last! Call Ian Boyle on 0416 169 606 today to book an inspection! Disclaimer: All information about the property has been provided to Ray White Berkeley Vale by third parties. Ray White Berkeley Vale has not verified the information and does not warrant its accuracy or completeness. Parties should make and rely on their own enquiries in relation to the property. We have obtained all information in this document from sources we believe to be reliable; however, we cannot guarantee its accuracy. Prospective purchasers are advised to carry out their own investigations.