

20 Clermont Street, Holmview, Qld 4207

House For Sale

Monday, 17 June 2024



20 Clermont Street, Holmview, Qld 4207

Bedrooms: 4

Bathrooms: 2

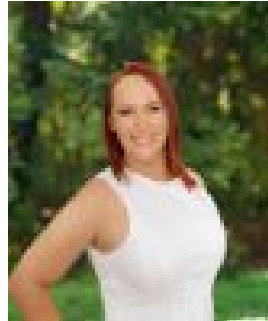
Parkings: 2

Area: 397 m2

Type: House



Eiles Brittany Hunt
0739103776



Niki Blenkins
0421229033

Expressions of Interest

Discover the perfect blend of comfort, style, and convenience at 20 Clermont Street, Holmview. Nestled on an elevated block, this stunning lowset brick house offers an exceptional lifestyle with its versatile layout, quality inclusions, and beautiful surroundings. Whether you're a growing family, a couple seeking space, or an investor looking for a great opportunity, this home promises to cater to all your needs with its thoughtful design and prime location. Stepping inside the home greets you with neutral tones that create a welcoming ambiance, beckoning you into the heart of the home. The spacious open plan kitchen, dining and living space seamlessly flows out to the covered alfresco, ensuring easy entertaining all year long. Designed with the growing family in mind, the bedrooms are well appointed, and the two internal living zones allow for separate entertainment. Thoughtful additions make this so much more than just a house. Epoxy flooring in the garage will deliver years longevity while the recently installed hybrid flooring throughout ensures low maintenance living. INSIDE - 4 bedrooms, including a spacious Master bedroom with walk-in robe and ensuite - Open-plan kitchen and dining area with breakfast bar, stone benchtops, and stainless-steel appliances - Separate living room - Contemporary main bathroom with separate bath and shower - Air conditioning in kitchen/dining, Bedroom 1, Bedroom 2, and the Master bedroom - Ceiling fans throughout - Versatile layout, ideal for the growing family - Epoxy flooring in the garage - Front security double lock door - Security cameras for peace of mind - 8mm hybrid flooring - Lots of storage space in garage and additional linen & storage cupboard OUTSIDE - Large timber deck in backyard with shade sail - Colourbond roof and side fencing - Elevated block with covered portico entry - Covered entertaining area perfect for gatherings - Fully fenced backyard with gorgeous landscaping - Beautiful retaining wall with established, easy to care for gardens, fruit tree's & herbs Holmview is a hidden gem offering an idyllic suburban lifestyle while still being close to everything you need. Ideally located between the city and the coast, here you can enjoy the best of both worlds - the tranquillity of suburban life with the vibrancy of Brisbane and the stunning Gold Coast just a short drive away. Just a short drive away, you'll find shopping centres, schools, parks, and public transport options, making every day errands a breeze. Residents love Holmview for its friendly community, excellent amenities, and the balance it offers between city life and nature's tranquillity. - 6 min drive to Holmview Central Shopping Centre - 6 min drive to Canterbury College - 7 min drive to Edens Landing State School - 8 min drive to Windaroo Valley State High School - 14 min drive to Logan Hospital - 35 min drive to Brisbane - 45 min drive to the Gold Coast Get in touch with the Hunt Property Team and experience the lifestyle you deserve, in a sought-after location! "RE/MAX Revolution Real Estate has diligently ensured that the information provided in this advertisement is accurate and reliable. However, we assume no liability for any errors, omissions, or discrepancies contained herein. Prospective buyers are encouraged to conduct their own independent investigations to verify the details."