

20 Dublin Street, Smithfield, NSW, 2164

Sold House

Thursday, 20 July 2023

BLAZE
REAL ESTATE

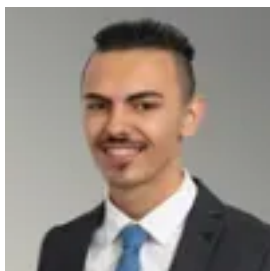
20 Dublin Street, Smithfield, NSW, 2164

Bedrooms: 3

Bathrooms: 2

Parkings: 2

Type: House



Dane Ball

SPLIT LEVEL, 696m2 BLOCK.

Regrettably the families decision is to sell. They have decided to move forward and this 1st time offered, brick veener family residence with city views. Terracotta roof tiling, enjoying a magnificent 17m+ wide frontage, gently elevated, easement free 696m2 block, draining to street. You may wish to build your dream home!!

Unique in design, will suit in law accommodation with 1-2 downstairs bedrooms/utility room, 2nd shower, separate toilet and undercover rear patio to relax and enjoy. The 40+m2, high clearance, drive through lock up garage + workbench also gives additional options.

Inspection is a must!! Upstairs boasts, another 2 bedrooms, BIW's, balcony off the main. Bathroom previously renovated, split air conditioning, high ceilings, oversized formal lounge room, large original kitchen, adjoins the dining area. Undercover front patio and super sized laundry will impress. All amenities including transport shopping centres or schools are nearby. Do not miss this popular central location!!

Will be sold, see you at the open for inspection. (All plans and approvals are on hand)