

20 Ellendale Way, South Morang, Vic 3752



Sold House

Wednesday, 3 April 2024

20 Ellendale Way, South Morang, Vic 3752

Bedrooms: 4

Bathrooms: 2

Parkings: 2

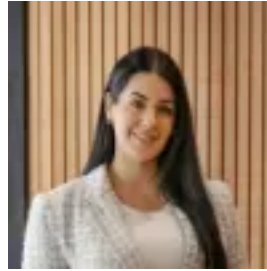
Area: 356 m2

Type: House



Tony Ong

0391111707



Ashlee Jade

0397175372

\$756,000

Enjoying a privileged lifestyle within easy access to all of the area's finest amenities which include Marymede College, Middle Gorge Train Station, Westfield Shopping Centre, Coles Complex at the Lakes, reputable schools and much more. With smart balance of space and easy care living. This exceptional home offers 4 spacious bedrooms (ensuite and walk in robe to master). An inviting entry to generous formal lounge, flowing through to stunning kitchen with granite bench tops and quality appliances adjoining meals and family area. Journey outside to good size undercover alfresco inviting effortless entertaining with family & friends and yard for extra activities. Blessed with an abundance of extra features which include the comforts of ducted heating and refrigerated cooling, alarm system, porcelain tiles, NBN plus a double lock up garage with internal access. Offering an excellent opportunity for either owner-occupiers or investors, this lovely family residence will surely impress upon inspection.