

20 Forest Drive, Clyde North, Vic 3978



House For Rent

Friday, 19 April 2024

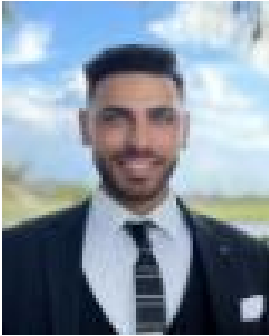
20 Forest Drive, Clyde North, Vic 3978

Bedrooms: 3

Bathrooms: 2

Parkings: 2

Type: House



Matthew Botros
1300876925

\$595 Per Week

Royal Melbourne Estates presents to you 20 Forest Drive, Clyde North, Vic 3978 This amazing 3 bedroom Family home in the Selandra Rise Estate The property offers the following stunning features:- Large Open Plan Living and Dining Area- Kitchen with Stainless-Steel Appliances - Master Bedroom with walk in wardrobe and Ensuite- 2 Bedrooms With Built In Wardrobes- Main Bathroom With Separate Toilet - Split System & Ducted Heating- Laundry - Undercover Alfresco Area With Outdoor Blinds to two side- 2 Car Garage Nearby amenities include:- Selandra Rise Shopping Centre- Shopping on Clyde- Heather Grove Outdoor Gym - Clyde Grand Reserve Playground Local schools nearby- Wilandra Rise Primary School- St Thomas the Apostle Catholic Primary School- St Peter's College, Clyde North Campus Apply Now, as this property won't last!! *Photo ID required at open for inspection Disclaimer: We have, in preparing this document, used our best endeavours to ensure that the information contained in this document is true and accurate, but we accept no responsibility and disclaim all liability in respect to any errors, omissions, inaccuracies or misstatements in this document. Prospective renters should make their own enquiries to verify the information contained in this document. renters should make their own enquires.