

**20 Gona Street, Beenleigh, Qld 4207**



**House For Sale**

Saturday, 11 November 2023

20 Gona Street, Beenleigh, Qld 4207

**Bedrooms: 3**

**Bathrooms: 2**

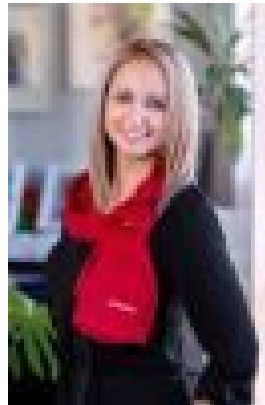
**Parkings: 1**

**Area: 1048 m2**

**Type: House**



Trina Wilson  
0427188500



Sonia Deighton  
0477889788

## Offers Over \$799,000

If you love the look of yesteryear, you will definitely fall head over heels for this gorgeous 3+ bedroom, 2 bathroom home with in-ground swimming pool, situated on a substantial 1048m<sup>2</sup> block with favourable zoning & 2 titles. Boasting character & charm, this home is sure to impress! A snapshot of what's on offer:- Massive 1048m<sup>2</sup> block with side access & 2 titles (potential dual side access) - located in the heart of Beenleigh, with favourable "Low-Medium Density Residential - Apartment" zoning for future growth- Beautifully renovated, vast home with practical floor plan - showcasing high ceilings, wooden floorboards & VJ feature panelling throughout- 3 bedrooms with plenty of natural light - 2 of these being oversized with ceiling fans & 1 with gorgeous bay window- Bonus room positioned next to the main bedroom, which could easily be converted into your 4th bedroom, walk-in-robe or use as a parent's retreat - with extra built-in storage & wall air-conditioner- Bright & inviting lounge room with original casement windows & wall air-conditioner - keep cool year-round- Stunning corbelled arch entryway, leading into your updated kitchen - complete with dishwasher, stone benchtops, electric cooktop, wall oven & rangehood + ample storage- French doors lead you from your kitchen into your hallway with additional storage - utilise this space as a rumpus area, dining room or just as a storage area... the choice is yours!- Modern main bathroom with updated vanity, cabinet storage & shower- Large external laundry room with additional shower & toilet - perfect for the kids after a swim- In-ground, fibreglass pool - just in time to be the host-with-the-most this summer! - Expansive backyard for the kids & pets with Colourbond fencing & single lock up garage - potential to subdivide or add a second dwelling for extra rental returns (subject to council approval) Location is key & it doesn't get more convenient than this... Beenleigh Station 750m walk; Beenleigh Marketplace 1.2km; Beenleigh State School 1.2km; Mount Warren Park shopping centre 1.3km & the lovely Mount Warren Park Golf Club 2.1km away. You are also within minutes to the M1 heading North or South... yet within this home you can feel a million miles away. As you can see, this property is the gift that keeps on giving! Homes of this calibre do not come along often & whether you're looking for your next family home or future development, it just adds up! So do not be the one to let this slip by... call us today to arrange a time to view!