

20 Hartz Road, Carpendale, Qld 4344

Acreage For Sale

Wednesday, 24 April 2024

NGU REAL ESTATE
LIFESTYLE

20 Hartz Road, Carpendale, Qld 4344

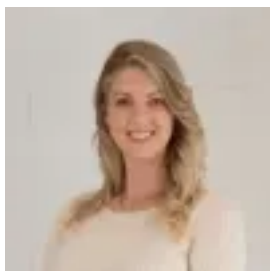
Bedrooms: 4

Bathrooms: 2

Parkings: 2

Area: 2 m2

Type: Acreage



Amie Tarrant
0753595808

\$950,000 PLUS

Set on a sprawling 5* acre block with picturesque views, this residence exudes quality and sophistication. Crafted by the esteemed 'Arden Vale Homes' just over 12 months ago, this executive property boasts spacious indoor and outdoor entertaining areas, quality landscaping and ample space to spread out and escape the everyday 'hustle and bustle'. The home has been designed with sustainability in mind and is completely 'off-grid'. Enjoy the financial benefits with dual water tanks (total capacity of 25,000L*) paired with a robust off-grid solar system boasting a 21 KW* battery. This ensures not only uninterrupted power but also a commitment to environmental responsibility. The infrastructure has been installed to an extremely high standard with the use of concrete blocks, road base driveway, and a shed pad, offering endless opportunities for outdoor enjoyment. The lush house yard, expertly turfed, provides a serene backdrop for relaxation and entertainment. As you enter the home, you will be impressed by the spacious interior, flooded with natural light and captivating views. The open-plan layout effortlessly connects family lounge and theatre room, creating an inviting space for gatherings or the enjoyment of privacy. Every detail has been meticulously considered, from the hybrid vinyl planking to the LED downlights and ceiling fans in every room, seamlessly blending elegance with energy efficiency. The open plan kitchen is equipped with a spacious walk-in pantry, sleek laminate benchtops, dishwasher, and induction cooktop, all designed with both functionality and style in mind. Retreat to the luxurious master suite, complete with a generously-sized walk-in robe, ensuite featuring a walk-in shower, and plush carpeting for added comfort. Additional bedrooms boast built-in robes, providing ample space for family or guests. Convenience is paramount with a double linen cupboard, separate toilet, and direct laundry access outside, while ducted air conditioning in the lounge and master suite ensures year-round comfort. Area Details: 25 minutes* to Toowoomba Within 30 minutes* to multiple Hospitals including Gatton, Laidley and Toowoomba 50 minutes* to Ipswich CBD 6 minutes* to Schools 5 minutes* to major conveniences including grocery shops, petrol station and much more 15 minutes* to major township of Gatton with fast food, multiple shopping centres, restaurants, cafes and much more With its prime location, superior craftsmanship, and array of modern amenities, 20 Hartz Road epitomizes contemporary living at its finest. Don't miss the opportunity to make this pristine home yours. Enquire now to arrange your inspection.*Approximately Disclaimer: All information provided is correct to the best of our ability. While we strive to ensure accuracy, we recommend that interested parties verify all details independently before making any decisions. Please contact the listing Agent for the most up-to-date and accurate information about the property.