

20 Hayfield Road, Mount Waverley, Vic 3149

House For Sale

Saturday, 3 February 2024



20 Hayfield Road, Mount Waverley, Vic 3149

Bedrooms: 4

Bathrooms: 2

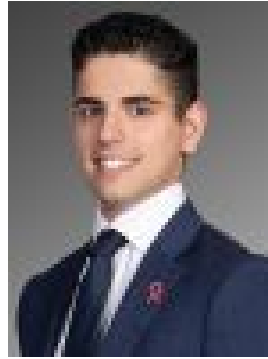
Parkings: 2

Area: 756 m2

Type: House



Mannie Psarakis
0449656725



Peter Serafino
0398096488

Contact Agent

Discreetly nestled within beautiful botanic gardens (756sqm approx), this meticulously maintained residence provides a serene family lifestyle from its high-side of the street position. Filled with traditional charm and a calming sense of peace, the 4 bedroom, 2 bathroom layout reveals a spacious lounge, immaculate kitchen/meals area, covered outdoor entertaining terrace, huge family room, ducted heating, split system AC and ample off street parking. Move in and enjoy as is, or explore untapped potential to add your own modern stamp of style, or the possibility of rebuilding your dream home or multiple townhouses (STCA). A tranquil garden oasis brimful of future possibilities, moments to transport, parklands, MWSC (catchment), Mt Waverley Village and train station.*Please Note* Buxton Real Estate may refuse to provide further information about the property should you prefer not to disclose your Full Contact Details including Phone Number. Photo id required upon entering the property.