

20 Kirribilli Road, New Gisborne, Vic 3438



House For Sale

Wednesday, 14 February 2024

20 Kirribilli Road, New Gisborne, Vic 3438

Bedrooms: 4

Bathrooms: 3

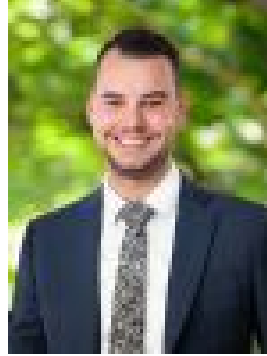
Parkings: 12

Area: 7 m2

Type: House



Aaron Hill
0397441455



Joshua Reeves
0438821093

\$5,200,000 - \$5,600,000

Expressions Of Interest Closing 9th of April at 5:00pm

Perched atop a commanding plateau, Kirribilli Manor stands as a testament to unparalleled architectural design, stirring emotions at first sight. Positioned on an expansive 18-acre allotment (approx), this residence offers panoramic views of the vast lands and the picturesque Macedon Ranges, seamlessly blending luxury living with tranquil farm life adventures. Approaching through Castlemaine Stone entrance and black iron gates, you enter an enviable homestead. A circular drive and elegant landscaping pave the way for a striking entry, setting the tone for the bespoke journey within. Upon stepping through double wrought iron doors, the bespoke nature of Kirribilli Manor unfolds. Soaring spotted gum timber ceilings, polished concrete floors, and Tuscan Polished render seamlessly connect rooms, creating an atmosphere of warmth and sophistication. The Spotted Gum staircase at the centre of the great room becomes a focal point, subtly guiding the flow throughout the home. To the right, the great room beckons with a floor-to-ceiling Castlemaine Stone fireplace, casting a warm and inviting glow. Further beyond lies the theatre room, a hidden gem designed for all occasions. Automatic block-out blinds transform the space into a private cinema at the touch of a button, with acoustic ceilings absorbing the sounds of excitement. Step into culinary excellence in this chef's kitchen, where every detail is a testament to the art of gastronomy. Adorned with top-of-the-line Swiss VZUG appliances, this kitchen seamlessly blends functionality with sophistication. Boasting not one but two dishwashers, a double sink, and a butler's pantry, catering to the needs of even the most ambitious cooking endeavours. The presence of a convection, steam & pyro oven, a coffee machine, and convenient heating drawers transforms this space into a haven. Granite countertops add a touch of luxury and durability, providing an exquisite canvas. From this meticulously designed space, the kitchen surveys the dining, sitting, and great room, fostering a seamless connection between the heart of culinary creativity and the vibrant energy of the living space. Precision and innovation converge in a harmonious dance, empowering chefs and home cooks alike to create masterpieces with unparalleled ease. This kitchen isn't just a space for preparing meals; it's a sanctuary where dreams come to life, elevating the art of cooking to an extraordinary experience. Nestled thoughtfully within the home, the accommodation unfolds seamlessly to provide comfort and charm. Ascending the main staircase and turning towards the East wing, you'll discover three generously sized bedrooms, each adorned with built-in robes, ceiling fans, panoramic views, and delightful casement windows, moments away from the family bathroom. To the West wing, the master suite awaits as a sanctuary for rest, boasting a walk-in robe with ample storage options and an opulent ensuite featuring a dual vanity and an indulgent double shower. For those quiet moments, picture yourself starting your day with a cup of coffee on the covered balcony, where breathtaking views stretch out before you, inviting you to peacefully survey the wider grounds framed by Mount Macedon. This space becomes a haven, a place where the morning unfolds gently, and the beauty of your surroundings becomes an integral part of your daily rhythm. Beyond the inviting veranda, the outdoor haven unfolds with an inground concrete pool, charming cubby house, and an exhilarating 70m flying fox. The gazebo with a grand open fireplace, a pool house, and a bar room create spaces for adult relaxation. Meticulously landscaped gardens enhance the warmth and hospitality of this inviting setting. The expansive outer grounds cater to farm life pursuits with three paddocks, two dams, a powered stable, shelter, tack room, and feed room. Additional features include a study with handcrafted spotted gum cabinetry, gas hydronic slab heating, double glazing, ducted vacuuming, automated blinds, smart electrical systems, a 5kw solar system, and electrical wiring on the external fencing not to mention the extensive irrigation system throughout with a bunker pump house. Located in the picturesque Macedon Ranges, Kirribilli Manor is just 45 minutes from Melbourne CBD, 43km to Melbourne Airport, and a short 5-minute drive to Gisborne Railway Station. This estate is more than a residence; it's an exquisite retreat where every detail converges to create a warm and inviting sanctuary.