

20 Lochran Road, Doreen, Vic 3754

CHWYLA

Sold House

Saturday, 17 February 2024

20 Lochran Road, Doreen, Vic 3754

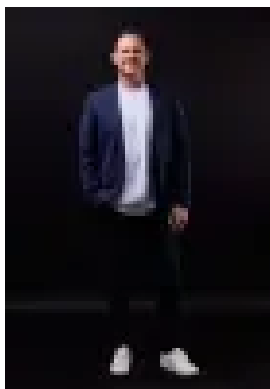
Bedrooms: 4

Bathrooms: 2

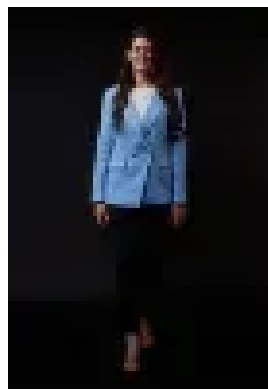
Parkings: 2

Area: 382 m2

Type: House



Paul Chwyla
0386009995



Stacy Richards
0386009995

Contact agent

Make more of : ? 382m2 block ? Four bedrooms ? Two bathrooms ? Two living areas ? Study nook with built-in bookshelf ? Double garage ? Video doorbell ? Big timber double door entrance ? Feature lighting ? Downlights ? Floor to ceiling sheers ? Blinds ? Stone kitchen benchtops ? 900mm appliances ? Dishwasher ? Plumbed fridge space ? Built-in wine rack ? Walk-in pantry ? Master with fully fitted out walk-in robe ? Three bedrooms with double door robes ? Double door linen ? Gas log fireplace ? Ducted heating ? Multiple split systems ? Double glazed windows ? Large stacker doors ? Soft Close drawers ? Additional insulation ? Covered alfresco ? Low maintenance landscaping ? Synthetic turf in backyard ? Vertical garden ? Freshly painted fences ? Exposed aggregate driveway ? Five year old home ? 400m to Lincoln Way Playground ? 600m to Plenty Gorge Parkland and walking tracks ? 650m to Horsley Crescent Playground ? 800m to Fortress Park ? 1.6km to Riverstone shops ? 2.2km to Mernda Town Centre shops ? The initial appeal – A five year old home with all the features. There's a big double front door entrance, fully fitted out walk-in robe in the master, 900mm appliances; and an exposed agg driveway, freshly painted fences, and vertical garden outside. The main attraction – It's warm and homely, and you'll be all about the high ceilings, feature lighting, dreamy white sheers, gas log fireplace and the overall open, roomy, airy feel. It's a home that just feels good. Walking in is like a hug from your bestie and a hot coffee on a cold morning. Your journey here starts this Saturday.