

20 Longwood Avenue, Cairnlea, Vic 3023



House For Sale

Thursday, 16 November 2023

20 Longwood Avenue, Cairnlea, Vic 3023

Bedrooms: 3

Bathrooms: 1

Parkings: 1

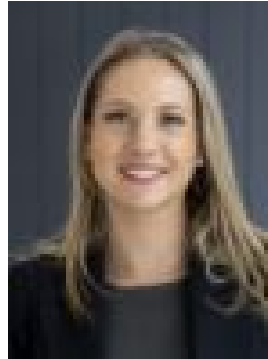
Area: 528 m2

Type: House



Victor Hsu

0421593463



Katelyn Meertens

0447485960

\$930,000 - \$990,000

Radiating an atmosphere of refined excellence and offering remarkable versatility in its floor plan, this impressive 42-square home provides a wonderful opportunity for a comfortable indoor/outdoor family lifestyle. Nestled in the highly sought-after Cairnlea with parkland views, this residence is perfectly situated to deliver a comfortable living experience. Crafted with meticulous attention to detail, the interior of the home features four spacious bedrooms, each generously appointed with built-in robes. The master suite is a symbol of luxury, boasting an elegant ensuite and expansive walk-in robes that exude sophistication. The lower level offers flexibility with an optional fifth bedroom, served by a guest bathroom, or it can serve seamlessly as a designated office/study space. Adding to its charm as a family retreat, the entrance reveals a refined formal lounge that sets the tone for the home's sophisticated aesthetics. Upstairs, a versatile rumpus/retreat area provides an extra layer of adaptability, catering to various preferences. The heart of the home, an expansive open-plan living/meals area, seamlessly integrates with a tastefully-appointed kitchen. This culinary haven features stone benchtops, an island breakfast bar, quality gas cooktops/ovens, and ample cupboard space, including a built-in pantry. Moving outdoors, you are greeted by an expansive covered entertainment area, offering countless possibilities for year-round outdoor leisure and relaxation. Complementing the luxurious living experience are additional features, including ducted heating, split system cooling/heating, a spacious family-sized laundry, an outdoor enclosed sunroom, and a remote-controlled double car garage. Thoughtfully adorned with elegant blinds throughout, the entire residence radiates sophistication. Nestled in a cherished neighborhood with a strong sense of community, you are conveniently located near Cairnlea Shopping Centre, Brimbank Shopping Centre, Cairnlea Park Reserve, local schools, public transport, walking trails, and just an 18km drive from the heart of Melbourne CBD.