

20 Maitland Avenue, Kew, Vic 3101



Sold House

Friday, 3 November 2023

20 Maitland Avenue, Kew, Vic 3101

Bedrooms: 2

Bathrooms: 1

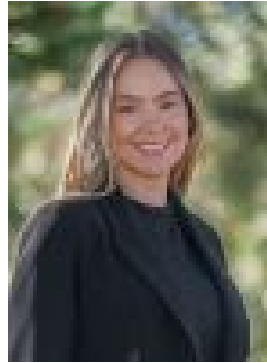
Parkings: 2

Area: 646 m2

Type: House



Mike Beardsley
0476777004



Ellie Morrish
0419481988

Contact agent

On a prestigious tree-lined avenue just minutes from Kew and Canterbury private schools, this immaculate brick residence provides move-in ready comfort with exciting potential to update, renovate/extend or, as others nearby have done, build a brand new luxury home on its 646sqm (approx.) parcel with prized northern rear. Set in tranquil Japanese-style gardens, impeccably cared for accommodation flows from a charming verandah entry through a central hall to two elegant living rooms with high ceilings and expansive windows that capture leafy landscaped views over the front garden. At the rear, a fully equipped kitchen overlooks a third living/dining domain that unfolds to a full-width deck for easy entertaining gently elevated above the northern rear garden. Two oversized bedrooms with built in robes, including one with deck access, are served by a central family bathroom and laundry. Further highlights include ducted heating, split cooling, excellent storage and gated off-street parking. Immediately enjoy or lease out then, when family needs dictate, renovate or fulfil your dream of a brand new luxury home (STCA) in this esteemed family position. Walk to Stradbroke Park, Outer Circle trails, local village shops and cafes, renowned Boccaccio Cellars, highly regarded Deepdene Primary, OLG and Gennazzano, High Street and Cotham Road trams with just minutes to other elite private schools including Camberwell, Carey and Trinity Grammars, Xavier, MLC and Ruyton.