

20 Ormeau Ridge Rd, Ormeau Hills, QLD, 4208

Sold House

Friday, 12 May 2023



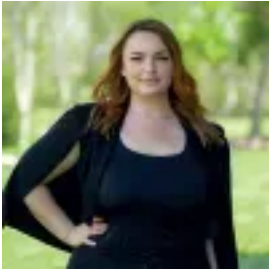
20 Ormeau Ridge Rd, Ormeau Hills, QLD, 4208

Bedrooms: 4

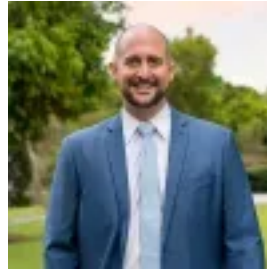
Bathrooms: 2

Parkings: 2

Type: House



Savannah Davis



Julian Woehrle

Stylish, Modern, Fresh

Here's your opportunity to secure a fantastic property, that's had all the hard work done. All you need to do is move in! Having had a major facelift, this home has been transformed into something truly stunning, stylish, modern, and fresh. With a top-to-bottom approach, the sellers have created a warm, inviting, safe space. It suits a multitude of buyers ranging from the young family to downsizers and everyone in-between. Sitting on a 750m² block in a very central location, featuring 4 bedrooms and a study, 2 bathrooms and 2 living areas, this home should be on your must see list.

Property Features:

- Master Bedroom at the rear of the home, with ceiling fan and split system air-conditioning, built-in robe and renovated ensuite with oversized shower
- 3 other great sized bedrooms all with ceiling fans and built-in robes
- Separate study with ceiling fan
- Central kitchen with 40mm stone-topped benches, gas cook top and electric under bench oven, walk-through butler's pantry with heaps of storage options, double-door fridge space
- Dining and family living off kitchen with split system air conditioning
- Separate lounge with split system air conditioning
- Great alfresco area overlooking the yard
- Renovated main bathroom
- Separate laundry
- Remote double lock-up garage with air-conditioning
- Approximately 5m wide side access for all your toys with entry gates on both sides
- Yard space big enough to accommodate a pool
- Solar panel system
- Gas hot water service
- Garden shed

Situated in Ormeau Hills, close to local schools, shops, and public transport this is the definition of convenient living. For retail therapy Westfield Coomera is 12 minutes down the highway, along with a multitude of restaurants and shops to keep you and your family entertained. Located within minutes' drive of the M1 access North or South, makes commuting easy. This property won't last long so don't delay. Call today to secure your viewing.

Disclaimer: This property is being sold by auction or without a price and therefore a price guide cannot be provided. The website may have filtered the property into a price bracket for website functionality purposes.

For all of your home loan needs, please contact our friendly broker, Conrad Palmer on 0410296050.

All inspections will be conducted adhering to COVID-19 Social Distancing Guidelines and Ray White's no-contact policy.

Important: Whilst every care is taken in the preparation of the information contained in this marketing, Ray White Upper Coomera will not be held liable for the errors in typing or information. All information is considered correct at the time of printing.