

20 Paget Street, Bruce, ACT 2617

House For Sale

Wednesday, 8 May 2024

BLACKSHAW

20 Paget Street, Bruce, ACT 2617

Bedrooms: 3

Bathrooms: 2

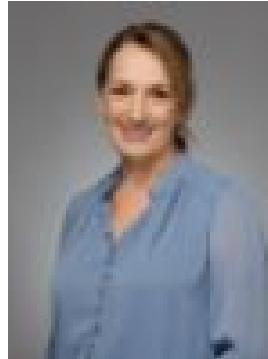
Parkings: 2

Area: 174 m2

Type: House



Matt Sebbens
0261473396



Naomi Sachs
0261473396

Auction

Discover contemporary living at its finest in this stunning 3-bedroom ensuite townhouse, where style meets spaciousness in the heart of the desirable Bruce neighborhood. Step inside to find a seamless open-plan layout downstairs, effortlessly blending the study, kitchen, living, and meals area. Flowing out to a private rear courtyard, it's perfect for entertaining or unwinding in peace. The kitchen boasts modern amenities including a gas cooktop, expansive walk-in pantry, dishwasher, and sleek stone benchtops. Practicality meets elegance with tiled internal access from the double garage, complete with a laundry and powder room for added convenience. Upstairs, indulge in luxury with a sprawling master bedroom featuring built-in wardrobes and an impressive ensuite. Two additional generously sized bedrooms, each with built-in wardrobes, and a main bathroom complete this level, ensuring comfort and privacy for all. Nestled in the sought-after new section of Bruce, enjoy unparalleled convenience with easy access to public transport, renowned restaurants, vibrant cafes, the University of Canberra, Belconnen, and the city center. Don't miss this exceptional opportunity to elevate your lifestyle with this remarkable property.

Features

- Light filled open plan living area
- Freshly painted throughout
- 2.65m high ceilings downstairs
- Central kitchen with walk-in pantry
- Main bedroom with ensuite
- Family bathroom and downstairs powder room
- Sunny front courtyard and rear courtyard
- Double glazing through out
- Ducted reverse cycle heating & cooling
- Double garage with internal access
- 400meters walk to public transport links
- 600metres walk to the AIS
- 1.3km walk to University of Canberra
- 2.4kms to North Canberra Hospital

Living: 138m² (approx.)
Garage: 38m² (approx.)
Body corp: \$893.50 per quarter (approx.)
Rates: Land tax: